

[kg] Article n°

Facade waling WS10 2.50m

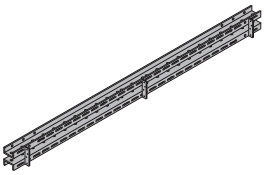
Facade waling WU14 6.00m

Fassadenriegel

50.0 580692000

189.2 580691000

Painted blue

**Facade precast member clamp H**

Fassaden-Fertigteilklemme H

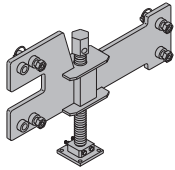
26.2 580693000

Galvanised

Length: 70 cm

Height: 41 cm

Width-across: 50 mm

**Facade precast member clamp V**

Fassaden-Fertigteilklemme V

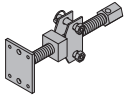
8.1 580694000

Galvanised

Length: 70 cm

Height: 41 cm

Width-across: 50 mm

**Facade precast member clamp O**

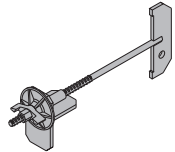
Fassaden-Fertigteilklemme O

4.9 580698000

Galvanised

Length: 59 cm

Height: 22 cm

**Facade waling connector**

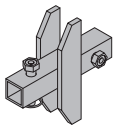
Fassaden-Riegelverbinder

4.7 580695000

Galvanised

Length: 26 cm

Height: 25 cm

**Facade anchor socket 15.0**

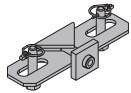
Fassaden-Ankermuffe 15,0

3.5 580696000

Galvanised

Length: 33 cm

Width: 12 cm

**Eye-lug anchor 15.0 without tie rod**

Ösenanker 15,0 ohne Ankerstab

1.2 580649000

Galvanised

Length: 11 cm

**Multi-purpose waling WS10 Top50 0.50m**

Multi-purpose waling WS10 Top50 0.75m

Multi-purpose waling WS10 Top50 1.00m

Multi-purpose waling WS10 Top50 1.25m

Multi-purpose waling WS10 Top50 2.50m

Mehrzweckriegel WS10 Top50

10.2 580001000

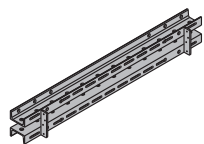
14.9 580002000

19.6 580003000

24.7 580004000

48.7 580009000

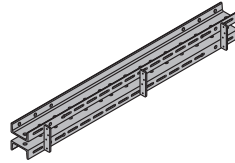
Painted blue

**Multi-purpose waling WU12 Top50 1.50m**

Mehrzweckriegel WU12 Top50 1,50m

37.5 580020000

Painted blue

**Steel waling WS10 Top50 0.50m**

Steel waling WS10 Top50 0.75m

Steel waling WS10 Top50 1.00m

Steel waling WS10 Top50 1.25m

Stahlwandriegel WS10 Top50

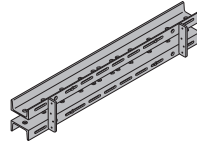
10.4 580038000

15.4 580039000

20.2 580040000

25.0 580041000

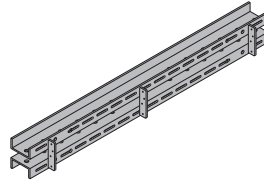
Painted blue

**Steel waling WU12 Top50 1.50m**

Stahlwandriegel WU12 Top50 1,50m

37.9 580087000

Painted blue

**Flange clamp H20**

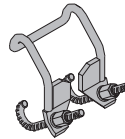
Flanschklammer H20

1.0 580135000

Galvanised

Width: 13 cm

Width-across: 19 mm

**Protective cap H20**

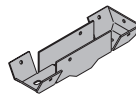
Stirnschuh H20

0.36 587248000

Galvanised

Length: 20 cm

Width: 7 cm

**Lifting bracket**

Kranöse

6.2 580460000

Galvanised

Height: 59 cm

**Corner connecting plate 90/50**

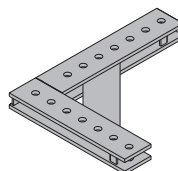
Winkellasche 90/50

13.8 580603000

Painted blue

Length: 51 cm

Width: 40 cm



[kg] Article n°

[kg] Article n°

Universal angle tie bracket

Universal-Winkelspanner

4.4 580604000**Panel strut 540**

Elementstütze 540

49.0 588249000

consisting of:

(A) Prop head

2 pcs.

Galvanised

Length: 40.8 cm

Width: 11.8 cm

Height: 17.6 cm

3.5 588244000**(B) Prop shoe**

Galvanised

Length: 20 cm

Width: 11 cm

Height: 10 cm

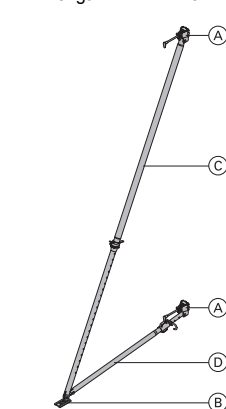
2.1 588245000**(C) Plumbing strut 540**

Galvanised

Length: 309 - 550 cm

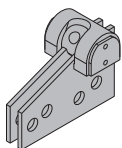
29.6 588250000**(D) Adjusting strut 220**

Length: 171 - 224 cm

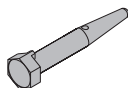
10.2 588251000

Galvanised

Delivery condition: folded closed

Painted blue
Length: 20 cm**Connecting pin 10cm**

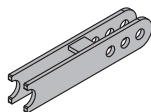
Verbindungsbolzen 10cm

0.34 580201000Galvanised
Length: 14 cm**Spring cotter 5mm**

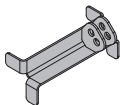
Federvorstecker 5mm

0.05 580204000Galvanised
Length: 13 cm**Facade waling holder**

Fassaden-Riegelhalter

2.3 580674000Galvanised
Length: 31 cm**Facade strut holder**

Fassaden-Stützenhalter

2.0 580675000Galvanised
Length: 30 cm**Panel strut 340**

Elementstütze 340

30.2 588246000

consisting of:

(A) Prop head

2 pcs.

Galvanised

Length: 40.8 cm

Width: 11.8 cm

Height: 17.6 cm

3.5 588244000**(B) Prop shoe**

Galvanised

Length: 20 cm

Width: 11 cm

Height: 10 cm

2.1 588245000**(C) Plumbing strut 340**

Galvanised

Length: 190 - 341 cm

14.2 588247000**(D) Adjusting strut 120**

Galvanised

Length: 80 - 130 cm

7.2 588248000

Galvanised

Delivery condition: folded closed

Plumbing strut 340 for precast members

Justierstütze 340 für Fertigteile

18.2 588296000

Galvanised

Length: 190 - 341 cm

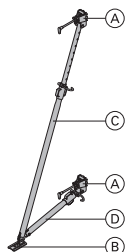
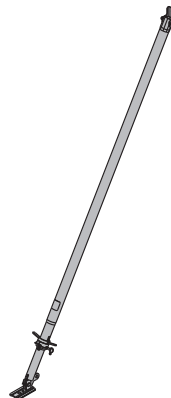
**Plumbing strut 540 for precast members**

Justierstütze 540 für Fertigteile

33.3 588297000

Galvanised

Length: 309 - 550 cm

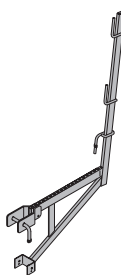


Plumbing strut 340 with prop head

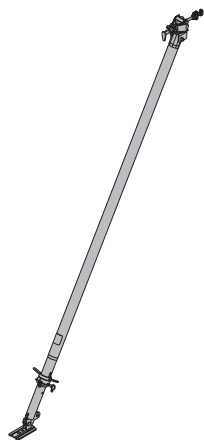
Justierstütze 340 mit Stützenkopf

28.0 580671000Galvanised
Length: 190 - 341 cm**Top scaffold bracket L painted**

Betonierkonsole L lackiert

12.0 587153000Painted blue
Length: 101 cm
Height: 159 cm**Plumbing strut 540 with prop head**

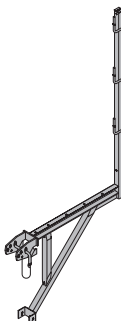
Justierstütze 540 mit Stützenkopf

35.2 580673000Galvanised
Length: 309 - 550 cm**Universal bracket 60**

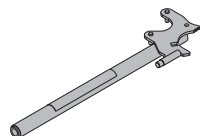
Universal-Konsole 60

14.0 580477000Galvanised
Length: 86 cm
Height: 181 cm**Universal bracket 90**

Universal-Konsole 90

30.4 580476000Galvanised
Length: 121 cm
Height: 235 cm**Universal dismantling tool**

Universal-Lösewerkzeug

3.7 582768000Galvanised
Length: 75.5 cm**Universal railing shackle**

Universal-Geländerbügel

3.0 580478000Galvanised
Height: 20 cm**Doka express anchor 16x125mm**

Doka-Expressanker 16x125mm

0.31 588631000Galvanised
Length: 18 cm
Follow fitting instructions!**Doka coil 16mm**

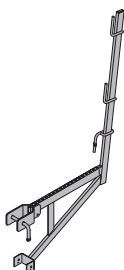
Doka-Coil 16mm

0.009 588633000Galvanised
Diameter: 1.6 cm**Scaffold tube 48.3mm 1.00m****3.6 682014000****Scaffold tube 48.3mm 1.50m****5.4 682015000****Scaffold tube 48.3mm 2.00m****7.2 682016000****Scaffold tube 48.3mm 2.50m****9.0 682017000****Scaffold tube 48.3mm 3.00m****10.8 682018000****Scaffold tube 48.3mm 3.50m****12.6 682019000****Scaffold tube 48.3mm 4.00m****14.4 682021000****Scaffold tube 48.3mm 4.50m****16.2 682022000****Scaffold tube 48.3mm 5.00m****18.0 682023000****Scaffold tube 48.3mm 5.50m****19.8 682024000****Scaffold tube 48.3mm 6.00m****21.6 682025000****Scaffold tube 48.3mmm****3.6 682001000**

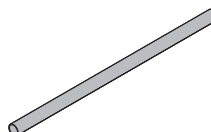
Gerüstrohr 48,3mm

Top scaffold bracket L

Betonierkonsole L

12.6 587153500Galvanised
Length: 101 cm
Height: 159 cm

Galvanised



[kg] Article n°

[kg] Article n°

Scaffold tube connection

Gerüstrohranschluss

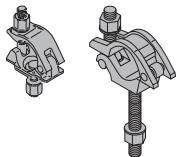
0.27 584375000

Galvanised
Height: 7 cm**Screw-on coupler 48mm 50****Screw-on coupler 48mm 95**

Anschraubkupplung

0.84 682002000

0.88 586013000

Galvanised
Width-across: 22 mm**Swivel coupler 48mm**

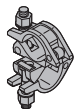
Drehkupplung 48mm

1.5 582560000

Galvanised
Width-across: 22 mm**Normal coupler 48mm**

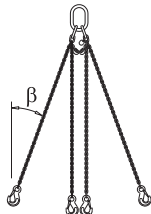
Normalkupplung 48mm

1.2 682004000

Galvanised
Width-across: 22 mm**Doka 4-part chain 3.20m**

Doka-Vierstrangkette 3,20m

15.0 588620000

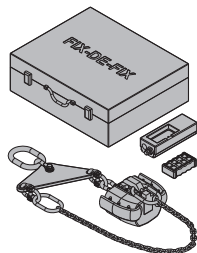
Follow the directions in the "Operat-
ing Instructions"!

CE

Fix-De-Fix remote uncoupling system 3150kg

Abhängeautomat Fix-De-Fix 3150kg

27.0 586014000

Follow the directions in the "Operat-
ing Instructions"!

CE

**Tool box GF**

GF-Werkzeugbox

6.5 580390000

included in scope of supply:

(A) Reversible ratchet 1/2"Galvanised
Length: 30 cm

0.73 580580000

(B) Fork wrench 13/17

0.08 580577000

(C) Fork wrench 22/24

0.22 580587000

(D) Fork wrench 30/32

0.80 580897000

(E) Ring spanner 17/19

0.27 580590000

(F) Extension 11cm 1/2"

0.20 580581000

(G) Extension 22cm 1/2"

0.31 580582000

(H) Universal joint coupling

0.16 580583000

(I) Nut for box spanner 19 1/2" L

0.16 580598000

(J) Box nut 13 1/2"

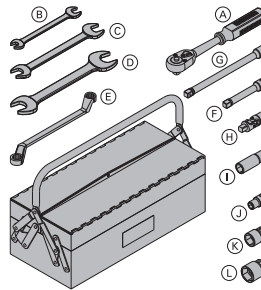
0.06 580576000

(K) Box nut 24 1/2"

0.12 580584000

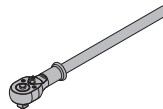
(L) Box nut 30 1/2"

0.20 580575000

**Reversible ratchet 3/4"**

Umschaltknarre 3/4"

1.5 580894000

Galvanised
Length: 50 cm**Box nut 50 3/4"**

Stecknuss 50 3/4"

0.81 581449000

**Doka Safety Systems**You will find working and protec-
tion platforms, guardrail systems
and access systems in the section
headed "Doka Safety Systems".