

[kg] Article n°

[kg] Article n°

Support. construction frame "Variable" 3.30m 187.8 580516000

Abstützbock Variabel 3,30m

consisting of:

(A) **Waling WU14 for supporting construction frame** 99.0 580510000

Painted blue

Height: 252 cm

(B) **Multi-purpose waling WS10 Top50 2.00m** 38.9 580007000

Painted blue

(C) **Tension plate** 2.5 580534000

Painted blue

Length: 19 cm

(D) **Supporting shoe** 9.5 580532000

Painted blue

Length: 28 cm

(E) **Connecting pin 10cm** 0.34 580201000

Galvanised

Length: 14 cm

(F) **Spring cotter 5mm** 0.05 580204000

Galvanised

Length: 13 cm

(G) **Spindle strut 12 3.00m** 32.0 580521000

Painted blue

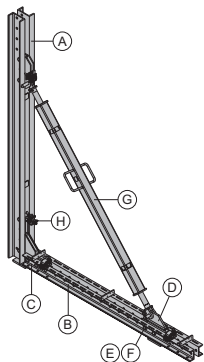
Length: 201 - 234 cm

(H) **Screw-on coupler 48mm 50** 0.84 682002000

Galvanised

Width-across: 22 mm

Painted blue

**Tension plate**

Zuglasche

2.5 580534000



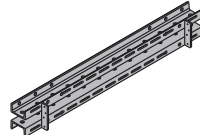
Painted blue

Length: 19 cm

Multi-purpose waling WS10 Top50 1.00m 19.6 580003000**Multi-purpose waling WS10 Top50 1.75m** 35.0 580006000**Multi-purpose waling WS10 Top50 2.00m** 38.9 580007000**Multi-purpose waling WS10 Top50 2.50m** 48.7 580009000**Multi-purpose waling WS10 Top50 2.75m** 54.2 580010000**Multi-purpose waling WS10 Top50 3.00m** 60.2 580011000**Multi-purpose waling WS10 Top50 3.50m** 68.4 580012000**Multi-purpose waling WS10 Top50 4.00m** 79.4 580013000

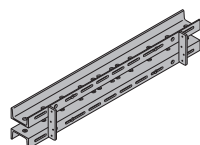
Mehrzweckriegel WS10 Top50

Painted blue

**Steel waling WS10 Top50 1.00m** 20.2 580040000**Steel waling WS10 Top50 1.75m** 35.8 580043000**Steel waling WS10 Top50 2.00m** 40.2 580044000**Steel waling WS10 Top50 2.50m** 51.0 580046000**Steel waling WS10 Top50 2.75m** 56.1 580047000**Steel waling WS10 Top50 3.00m** 60.4 580048000**Steel waling WS10 Top50 3.50m** 71.5 580050000**Steel waling WS10 Top50 4.00m** 82.1 580052000

Stahlwandriegel WS10 Top50

Painted blue

**Spindle strut 12 3.00m**

Spindelstrebe 12 3,00m

32.0 580521000

Painted blue

Length: 201 - 234 cm

**Waling WU14 for supporting construction frame** 99.0 580510000

Abstützbockriegel WU14

consisting of:

(A) **Steel section WU14 f. supp. constr. frame** 81.0 580509000

Painted blue

Height: 250 cm

(B) **Pressure shoe** 6.2 580531000

Painted blue

Height: 32 cm

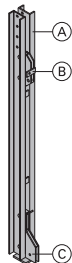
(C) **Anchoring shoe** 12.0 580533000

Painted blue

Height: 51 cm

Painted blue

Height: 252 cm

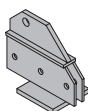
**Supporting shoe**

Stützschuh

9.5 580532000

Painted blue

Length: 28 cm



[kg] Article n°

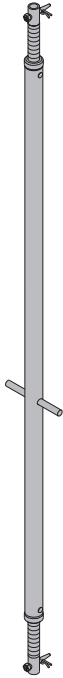
[kg] Article n°

Spindle strut T7 305/355cm

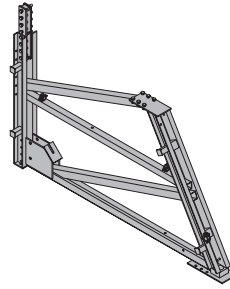
Spindelstrebe T7 305/355cm

35.0 584327000

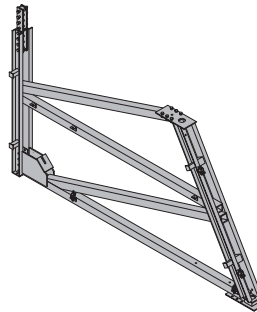
Galvanised

**Attachable frame F 1.50m**

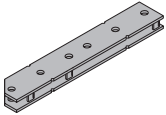
Anbaurahmen F 1,50m

236.0 580502000Painted blue
Length: 280 cm**Attachable frame F 2.00m**

Anbaurahmen F 2,00m

451.0 580501000Painted blue
Length: 394 cm**Formwork element connector FF20/50 Z**

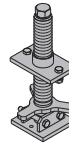
Elementverbinder FF20/50 Z

6.0 587533000Painted blue
Length: 55 cm**Front spindle for supp. construction frame**

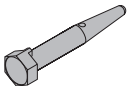
Abstützbockspindel vorne

8.5 580508000

Galvanised

**Connecting pin 10cm**

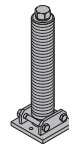
Verbindungsbolzen 10cm

0.34 580201000Galvanised
Length: 14 cm**Rear spindle for supp. construction frame**

Abstützbockspindel hinten

18.3 580515000

Galvanised

**Spring cotter 5mm**

Federvorstecker 5mm

0.05 580204000Galvanised
Length: 13 cm**Anchor waling 0.70m**

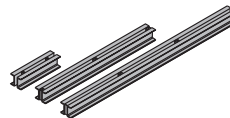
Anchor waling 1.95m

Anchor waling 2.95m

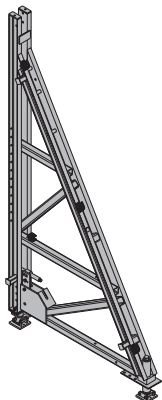
27.0 580517000**76.3 580545000****110.0 580546000**

Ankerriegel

Painted blue

**Supporting construct. frame Universal F 4.50m**

Abstützbock-Universal F 4,50m

306.0 580500000Painted blue
Length: 196 cm
Height: 365 - 394 cm**Multi-purpose waling WU12 Top50 2.00m**

Multi-purpose waling WU12 Top50 3.00m

Mehrzweckriegel WU12 Top50

50.0 580022000**75.7 580024000**

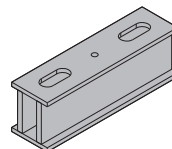
Painted blue

Anchoring profile 0.55m

Ankerprofil 0,55m

44.5 582904000

Painted blue

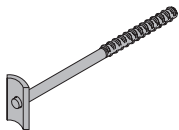


[kg] Article n°

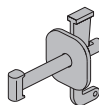
[kg] Article n°

Anchor waling positioner

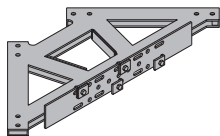
Ankerriegelhalter

0.62 580539000Galvanised
Length: 31 cm**Framax wedge clamp**

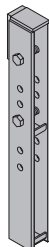
Framax-Spannklemme

1.5 588152000Galvanised
Length: 21 cm**Corner plate supporting constr. frame**

Ecklasche Abstützbock

44.4 580518000Painted blue
Length: 92 cm
Width: 92 cm**Framax supporting construct. frame connector**

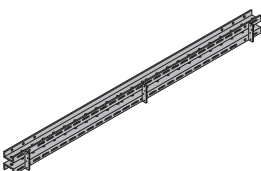
Framax-Bocklasche

15.0 580506000Painted blue
Height: 77 cm**Facade waling WS10 2.50m**

Fassadenriegel WS10 2,50m

50.0 580692000

Painted blue

**Framax supporting construct. frame bolt 36cm**

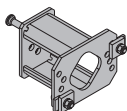
Framax-Bockschraube 36cm

0.62 580505000

Galvanised

**Supporting construction distancer 20cm**

Bockdistanz 20cm

9.4 580519000Galvanised
Length: 25 cm
Width: 19 cm
Height: 20 cm**Framax pressure plate 6/15**

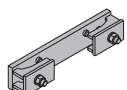
Framax-Druckplatte 6/15

0.80 588183000

Galvanised

**Clamp for supp. constr. distancer 20cm**

Klemme für Bockdistanz 20cm

5.0 582920000Galvanised
Length: 36 cm
Width: 7 cm**Attachable roller 200**

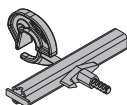
Ansteckrolle 200

19.3 580538000Painted blue
Height: 38 cm**Waling-to-bracket holder 9-15cm**

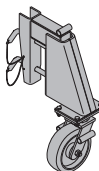
Riegelhalter 9-15cm

2.7 580625000

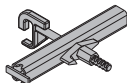
Galvanised

**Attachable roller 250**

Ansteckrolle 250

47.0 580537000Painted blue
Height: 78 cm**Waling-to-bracket holder**

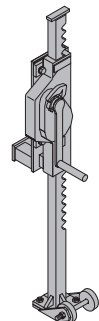
Keilriegelhalter

2.5 580526000Galvanised
Length: 26 cm
Height: 31 cm**Winch with transport device**

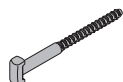
Hubwinde mit Transportroller

37.0 580541000Painted blue
Height: 127 cm
Follow the directions in the "Operating Instructions"!

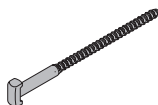
CE

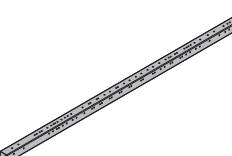
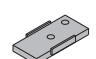
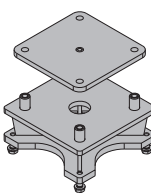
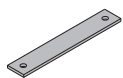
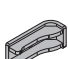
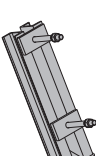
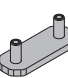
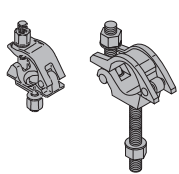
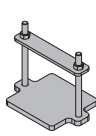
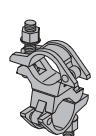
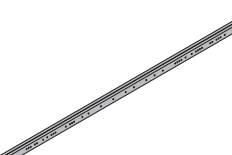
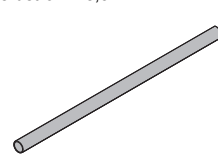
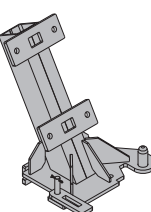
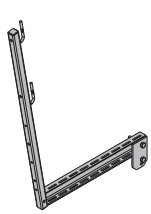
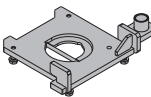
**Framax universal fixing bolt 10-16cm**

Framax-Universalverbinder 10-16cm

0.60 588158000Galvanised
Length: 26 cm**Framax universal fixing bolt 10-25cm**

Framax-Universalverbinder 10-25cm

0.69 583002000Galvanised
Length: 36 cm

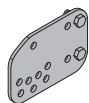
Travelling profile F 2.00m front Verfahrprofil F 2,00m vorne 	180.0 582925000	Bolting plate F 2.00m Schraubplatte F 2,00m 	2.9 582933000
Wheel connector F 2.00m front Radanschluss F 2,00m vorne 	33.7 582926000	Connection plate F 2.00m Verbindungsplatte F 2,00m 	2.3 582934000
Clamping jaw F 2.00m Klemmbacke F 2,00m 	0.82 582927000	Lifting bracket F 2.00m rear Hubkonsole F 2,00m hinten 	14.0 582935000
Clamping plate F 2.00m Klemmplatte F 2,00m 	3.5 582928000	Screw-on coupler 48mm 50 Screw-on coupler 48mm 95 Anschraubkupplung 	0.84 682002000 0.88 586013000
Intermediate plate F 2,00m Zwischenplatte F 2,00m 	6.0 582929000	Swivel coupler 48mm Drehkupplung 48mm 	1.5 582560000
Travelling profile F 2.00m rear Verfahrprofil F 2,00m hinten 	187.5 582930000	Scaffold tube 48.3mm 1.00m Scaffold tube 48.3mm 1.50m Scaffold tube 48.3mm 2.00m Scaffold tube 48.3mm 2.50m Scaffold tube 48.3mm 3.00m Scaffold tube 48.3mm 3.50m Scaffold tube 48.3mm 4.00m Scaffold tube 48.3mm 4.50m Scaffold tube 48.3mm 5.00m Scaffold tube 48.3mm 5.50m Scaffold tube 48.3mm 6.00m Scaffold tube 48.3mmm Gerüstrohr 48,3mm 	3.6 682014000 5.4 682015000 7.2 682016000 9.0 682017000 10.8 682018000 12.6 682019000 14.4 682021000 16.2 682022000 18.0 682023000 19.8 682024000 21.6 682025000 3.6 682001000
Wheel connector F 2.00m rear Radanschluss F 2,00m hinten 	44.5 582931000	Screw-on access bracket MF75 Anschraubühne MF75 	19.0 580669000
Connection plate F 2.00m Anschlussplatte F 2,00m 	15.8 582932000		

[kg] Article n°

[kg] Article n°

Swivel plate MF
Schwenkplatte MF

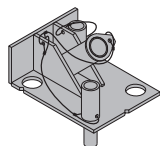
4.5 580672000

Galvanised
Length: 29 cm
Height: 20 cm**Crane sling 3.50m**
Kranseilschleufe 3,50m

8.8 580461000

Diameter: 16 cm
Follow the directions in the "Operating Instructions"!**Testing truss for diagonal anchors 15.0/20.0**
Prüfbock für Schräganker 15,0/20,0

13.5 580514000

Galvanised
Length: 32 cm
Width: 25 cm
Height: 19 cm**Universal tool box 15.0**
Universal-Werkzeugbox 15,0

9.1 580392000

included in scope of supply:

(A) Reversible ratchet 1/2"Galvanised
Length: 30 cm**(B) Fork wrench 13/17**

0.08 580577000

(C) Fork wrench 22/24

0.22 580587000

(D) Fork wrench 30/32

0.80 580897000

(E) Fork wrench 36/41

1.0 580586000

(F) Ring spanner 17/19

0.27 580590000

(G) Square nut 22

0.31 580589000

(H) Box spanner 41

0.99 580585000

(I) Extension 11cm 1/2"

0.20 580581000

(J) Extension 22cm 1/2"

0.31 580582000

(K) Universal joint coupling

0.16 580583000

(L) Nut for box spanner 19 1/2" L

0.16 580598000

(M) Box nut 13 1/2"

0.06 580576000

(N) Box nut 24 1/2"

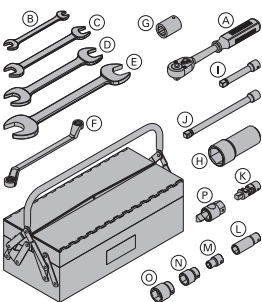
0.12 580584000

(O) Box nut 30 1/2"

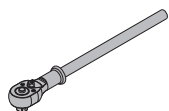
0.20 580575000

(P) Positioning cone spanner 15.0 DK

0.30 580579000

Galvanised
Length: 8 cm
Width-across: 30 mm**Reversible ratchet 3/4"**
Umschaltknarre 3/4"

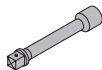
1.5 580894000

Galvanised
Length: 50 cm**Hexagon spanner head 46 3/4"**
Sechskantnuss 46 3/4"

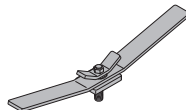
0.70 580512000

**Extension 20cm 3/4"**
Verlängerung 20cm 3/4"

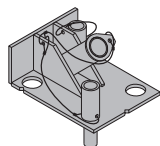
0.68 580683000

**Cone spanner 20.0**
Konusschlüssel 20,0

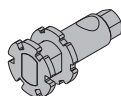
3.5 581471000

Galvanised
Length: 57 cm**Testing truss for diagonal anchors 15.0/20.0**
Prüfbock für Schräganker 15,0/20,0

13.5 580514000

Galvanised
Length: 32 cm
Width: 25 cm
Height: 19 cm**Clearance-cone dismantling tool**
Lösewerkzeug Freistellkonus

0.67 581864000

Galvanised
Length: 10.7 cm
Width-across: 24 mm**Universal tool box 15.0**
Universal-Werkzeugbox 15,0

9.1 580392000

included in scope of supply:

(A) Reversible ratchet 1/2"Galvanised
Length: 30 cm**(B) Fork wrench 13/17**

0.08 580577000

(C) Fork wrench 22/24

0.22 580587000

(D) Fork wrench 30/32

0.80 580897000

(E) Fork wrench 36/41

1.0 580586000

(F) Ring spanner 17/19

0.27 580590000

(G) Square nut 22

0.31 580589000

(H) Box spanner 41

0.99 580585000

(I) Extension 11cm 1/2"

0.20 580581000

(J) Extension 22cm 1/2"

0.31 580582000

(K) Universal joint coupling

0.16 580583000

(L) Nut for box spanner 19 1/2" L

0.16 580598000

(M) Box nut 13 1/2"

0.06 580576000

(N) Box nut 24 1/2"

0.12 580584000

(O) Box nut 30 1/2"

0.20 580575000

(P) Positioning cone spanner 15.0 DK

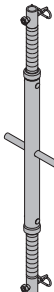
0.30 580579000

Galvanised
Length: 8 cm
Width-across: 30 mm**Spindle strut T6 100/150cm**

12.5 584323000

Spindelstrebe T6 100/150cm

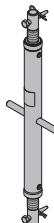
Galvanised

**Spindle strut T7 100/150cm**

16.8 584309000

Spindelstrebe T7 100/150cm

Galvanised

**Spindle strut T7 200/250cm**

26.2 584325000

Spindelstrebe T7 200/250cm

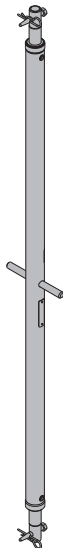
Galvanised



Spindle strut T7 250/300cm

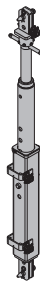
Spindelstrebe T7 250/300cm

Galvanised

**29.4 584326000****Spindle strut SL-1 T16 140/225cm**

Spindelstrebe SL-1 T16 140/225cm

Galvanised

**87.8 582872000****Spindle strut SL-1 T16 220/375cm**

Spindelstrebe SL-1 T16 220/375cm

Galvanised

**123.0 582874000****Spindle strut T10 350/400cm**

Spindelstrebe T10 350/400cm

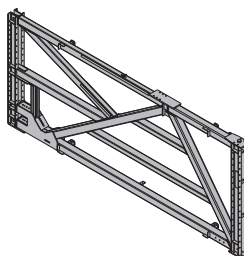
Galvanised

**57.5 584328000****Attachable frame F 2.40m**

Anbaurahmen F 2,40m

Painted blue

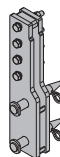
Length: 576 cm

**1107.0 582901000****Stacking plate F 2.40m**

Aufstocklasche F 2,40m

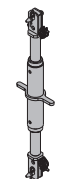
Painted blue

Height: 63.5 cm

**32.5 582902000****Spindle strut SL-1 T16 100/140cm**

Spindelstrebe SL-1 T16 100/140cm

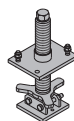
Galvanised

**54.1 582871000****Spindle for attachable frame F 2.40m**

Spindel für Anbaurahmen F 2,40m

Galvanised

Height: 47.5 cm

**20.1 582903000****Lowering wedge 1000kN**

Absenkkeil 1000kN

Painted blue

Height: 18.2 - 27.2 cm

**53.5 582905000**

[kg] Article n°

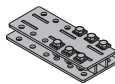
[kg] Article n°

Ring spanner 80

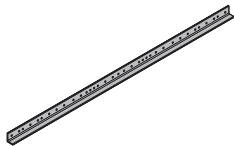
Ringschlüssel 80

Galvanised
Length: 62.4 cm**3.8 582906000****Intermediate flange for supp. constr. frame**

Zwischenflansch für Abstützbock

Painted blue
Length: 42.7 cm**16.2 582911000****Bracing profile 2.95m**

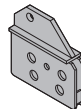
Verschwertungsprofil 2,95m



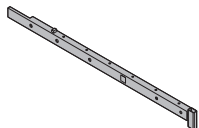
Painted blue

42.5 582907000**Supporting shoe WU16**

Stützschuh WU16

Painted blue
Length: 26.5 cm**8.3 582912000****Platform profile 1.00m f. supp. constr. frame**

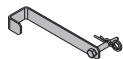
Bühnenprofil 1,00m für Abstützbock

Galvanised
Length: 147.5 cm**10.7 582908000****Pressure shoe T7/T16**

Druckschuh T7/T16

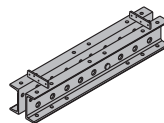
Painted blue
Height: 72.5 cm**18.5 582913000****Extension safety clamp for platform profile**

Auszugsicherung für Bühnenprofil

Galvanised
Length: 38.4 cm**1.7 582909000****Multi-purpose waling SL-1 WU16 1.00m**

Multi-purpose waling SL-1 WU16 3.00m

Mehrzweckriegel SL-1



Painted blue

35.0 582877000**107.0 582888000****Handrail post 1.00m**

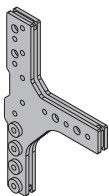
Geländer 1,00m

Galvanised
Length: 124 cm**3.8 584335000****Waling connector SL-1 WU16 0.75m**

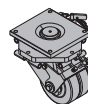
Riegelverbinder SL-1 WU16 0,75m

Galvanised
Length: 75 cm**31.0 582886000****T plate for supporting construction frame**

T-Lasche für Abstützbock

Painted blue
Length: 74.6 cm**29.8 582910000****Heavy duty wheel 90kN**

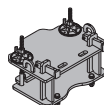
Schwerlastrad 90kN

Galvanised
Height: 38 cm**85.0 582921000****Connecting pin SL-1 D32 100**

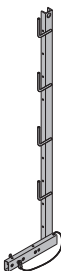
Verbindungsbolzen SL-1 D32 100

Galvanised
Length: 17 cm**1.0 582885000****Wheel connector F 2.40m**

Radanschluss F 2,40m

Galvanised
Length: 49 cm
Width: 36 cm
Height: 25 cm**45.0 582922000****Handrail post T 1.80m**

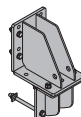
Einschubgeländer T 1,80m



Galvanised

17.7 584373000**Travelling profile bracket F 2.40m**

Verfahrprofil-Konsole F 2,40m

Galvanised
Length: 28.5 cm
Width: 22 cm
Height: 48.2 cm**31.0 582924000**

Doka Safety Systems



You will find working and protection platforms, guardrail systems and access systems in the section headed "Doka Safety Systems".