

**doka**

# HUGE OVERSTOCK SALE



## ROCK BOTTOM PRICING ON:

- Top 50 gang formwork
- D22 Dam brackets
- C8 A-Frames 8', 10', 13', 16'
- C8 Steel Walers
- T7 Spindle Struts
- 140 Kip Girder Jacks
- Staxo 100 frame shoring

Effective from 09/01/2017 while supplies last.

**#MoreThanFormwork**



# Large-area formwork Top 50





# For all shapes and sizes

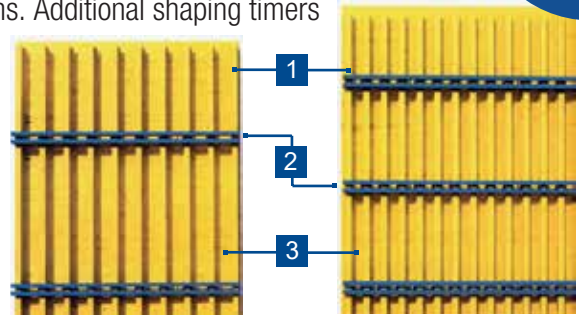
## Immense flexibility with only three system components.

Large-area formwork Top 50 is a flexible gang formwork system designed for a wide range of wall forming applications. Size, tie spacing and form-face of the gangs can be assembled to accommodate the required concrete pressure, architectural patterns and other project specifications. Additional shaping timbers can be incorporated to build standard radial or complex shaped wall formwork.

\*Up to  
**50%**  
off

Top 50 in detail:

- H20 timber beams (1)
- WS-10 steel wailings (2)
- Your choice of plywood form-facing (3)



## Example Gang designs

Plan view

Length	
2'-6"	
4'-0"	
5'-0"	
6'-0"	
8'-0"	
10'-0"	
12'-0"	
14'-0"	
16'-0"	

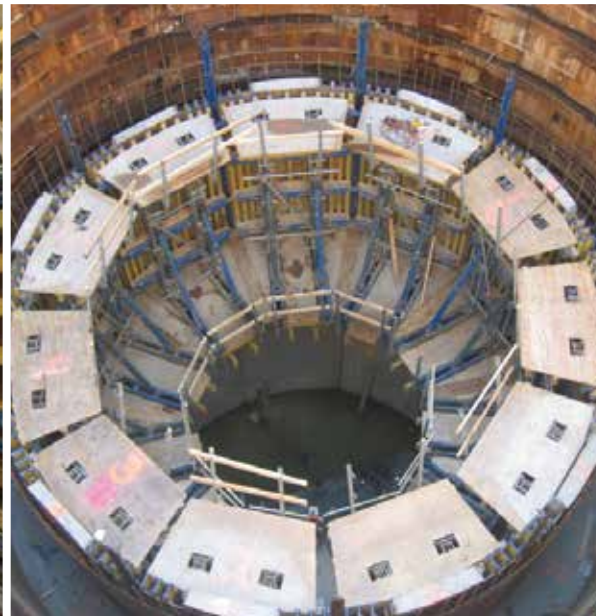
Section view

6'-4"	8'-6"	10'-0"	12'-0"
13'-3"	15'-3"	16'-6"	19'-10"

Top 50 accessories include wide range of standard corners, splice plates, connection hardware, lifting brackets, bracing, walkway brackets and form ties. Please consult your Doka representative for detailed list of accessories and hardware.



# Dam formwork D22





# High capacity climbing system for one-sided concrete

## The climbing system for one-sided concrete applications

D22 Dam formwork stands out for its high load-bearing capacity, flexibility, speed and operational safety. The system can be tailored to a wide range of single-sided applications such as mass concrete structures.



### Versatility

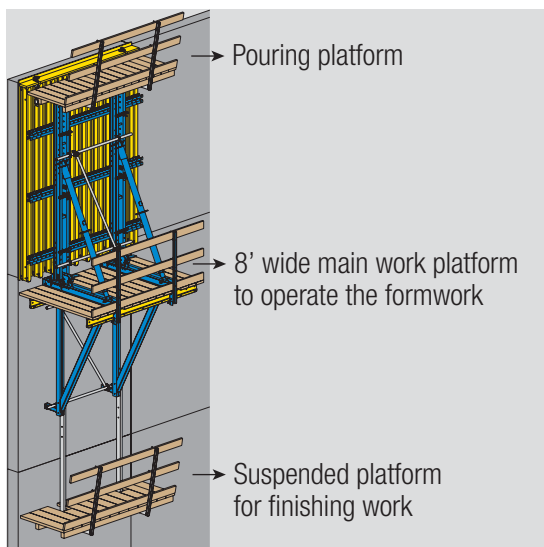
- Can be used with all Doka framed and timber-beam formwork
- Typical concrete pressure: 1250 psf at 10'-0" pour high
- Fully adjustable and tiltable rollback provides up to 2'-6" striping relief

### Speed

- The modular design of the D22 dam formwork allows use as an A-Frame for the first pour on top of the slab
- The D22 system with integrated platforms can be lifted with the attached formwork as one unit
- Fast drift pin connections of the main components allow for fast assembly and modifications

### Safety

- Multiple levels of wide working platforms with integrated guardrails provide advancing safety and productivity



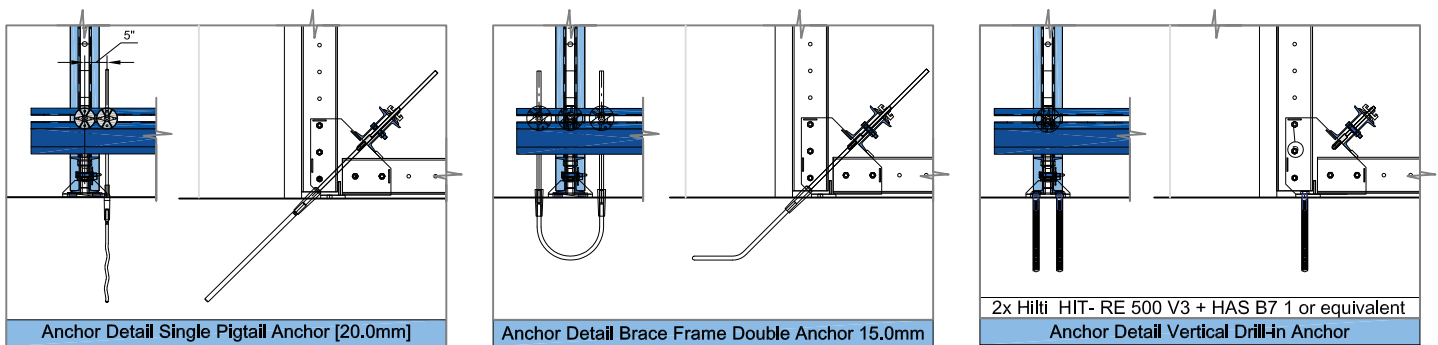
# C8 A-Frames

\*Up to  
**50%**  
off

## Versatility

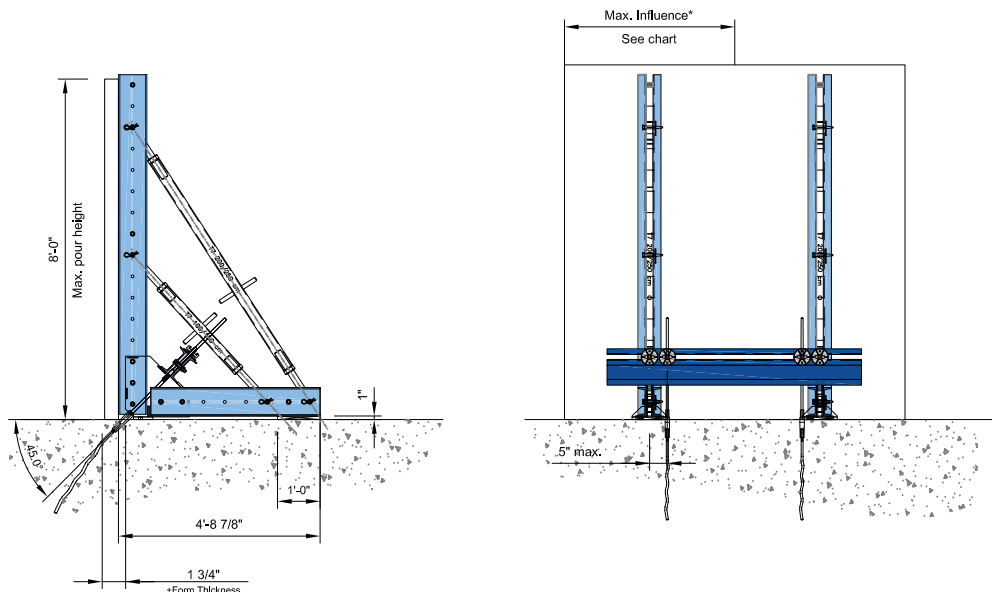
- Can be combined with many formwork systems
- Delivered in loose components - individual components can be disassembled and reused for a large variety of forming applications
- The anchor-plate is designed for use with cast-in anchors or drill-in anchors
- Available load charts for standard 15.0mm, 20.0mm and drilled anchor solutions

## Anchor Detail



## Up to 8'-0" Height

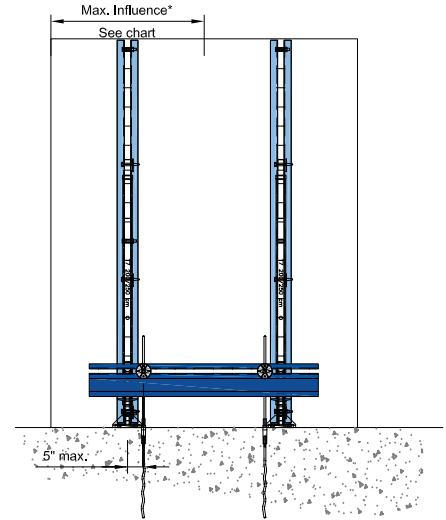
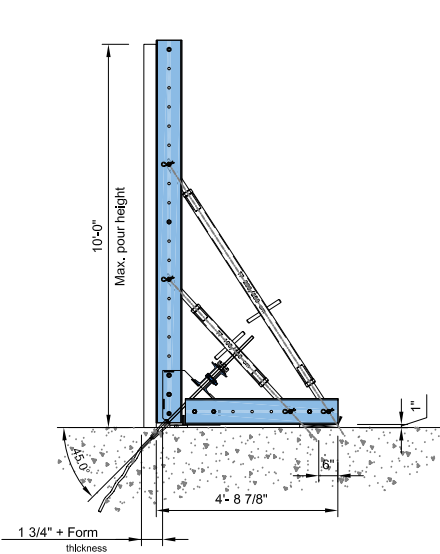
Type 1 A Frame w/ Diagonal anchor system		
Pour height	Max. Influence	Anchor system
<b>CONCRETE PRESSURE: 1200 PSF</b>		
8'-0"	4'-0"	1 x 20.0 mm
<b>CONCRETE PRESSURE: 800 PSF</b>		
6'-0"	10'-0"	1 x 20.0 mm
7'-0"	7'-9 5/8"	1 x 20.0 mm
7'-0"	8'-0"	2 x 15.0 mm
8'-0"	6'-3 5/8"	1 x 20.0 mm
8'-0"	6'-4 3/4"	2 x 15.0 mm
<b>CONCRETE PRESSURE: 600 PSF</b>		
6'-0"	10'-0"	1 x 20.0 mm
7'-0"	9'-0"	1 x 20.0 mm
8'-0"	7'-6"	1 x 20.0 mm



# For one-sided concrete support

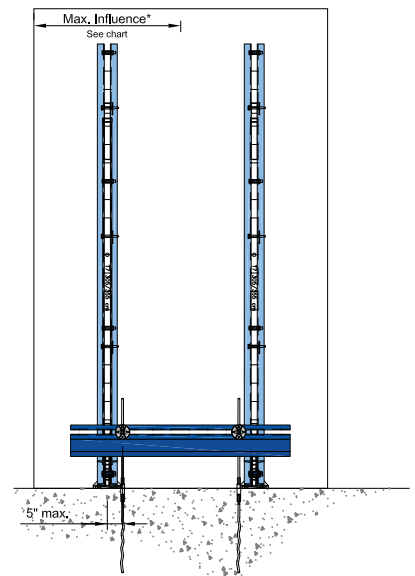
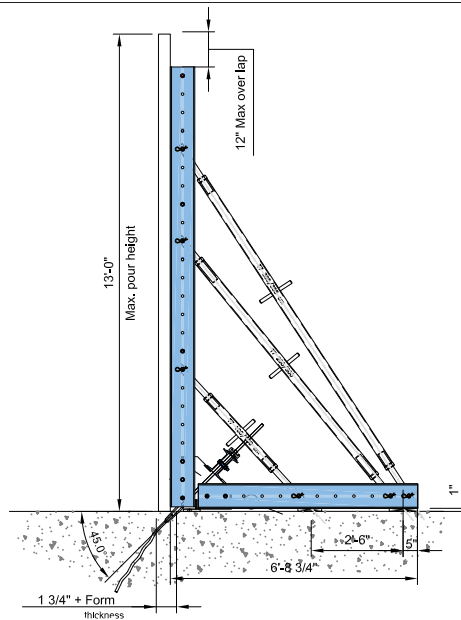
## Up to 10'-0" Height

Type 2 A Frame		
Pour height	Max. Influence	Anchor system
<b>CONCRETE PRESSURE: 800 PSF</b>		
6'-0"	10'-0"	1 x 20.0 mm
7'-0"	7'-9 5/8"	1 x 20.0 mm
7'-0"	8'-0"	2 x 15.0 mm
8'-0"	6'-3 5/8"	1 x 20.0 mm
8'-0"	6'-4 5/8"	2 x 15.0 mm
9'-0"	5'-3 5/8"	1 x 20.0 mm
9'-0"	5'-4 5/8"	2 x 15.0 mm
10'-0"	4'-7 1/4"	1 x 20.0 mm
<b>CONCRETE PRESSURE: 600 PSF</b>		
6'-0"	10'-0"	1 x 20.0 mm
7'-0"	9'-0"	1 x 20.0 mm
8'-0"	7'-6"	1 x 20.0 mm
9'-0"	6'-3 5/8"	1 x 20.0 mm
10'-0"	5'-0"	1 x 20.0 mm



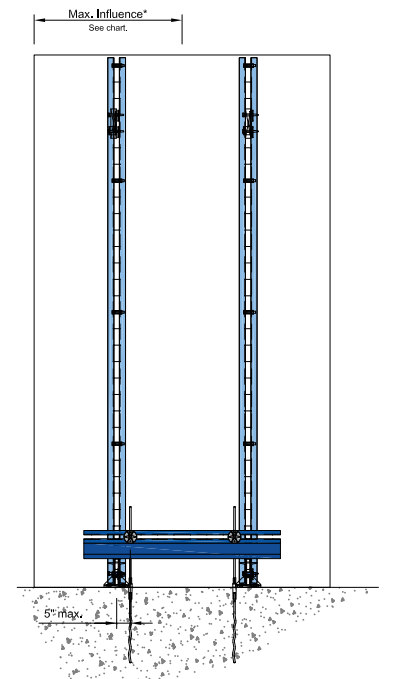
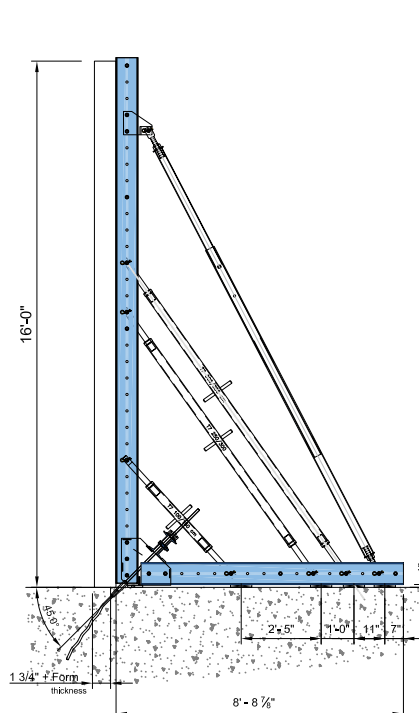
## Up to 13'-0" Height

Type 3 A Frame		
Pour height	Max. Influence	Anchor system
<b>CONCRETE PRESSURE: 800 PSF</b>		
11'-0"	4'-0"	1 x 20.0 mm
12'-0"	3'-7 1/4"	1 x 20.0 mm
12'-0"	3'-9 5/8"	2 x 15.0 mm
13'-0"	3'-3 1/4"	1 x 20.0 mm
13'-0"	3'-7 3/4"	2 x 15.0 mm
13'-0"	3'-9"	2 x 20.0 mm
<b>CONCRETE PRESSURE: 600 PSF</b>		
11'-0"	5'-0"	1 x 20.0 mm
12'-0"	4'-6"	1 x 20.0 mm
12'-0"	5'-0"	2 x 15.0 mm
13'-0"	4'-0"	1 x 20.0 mm

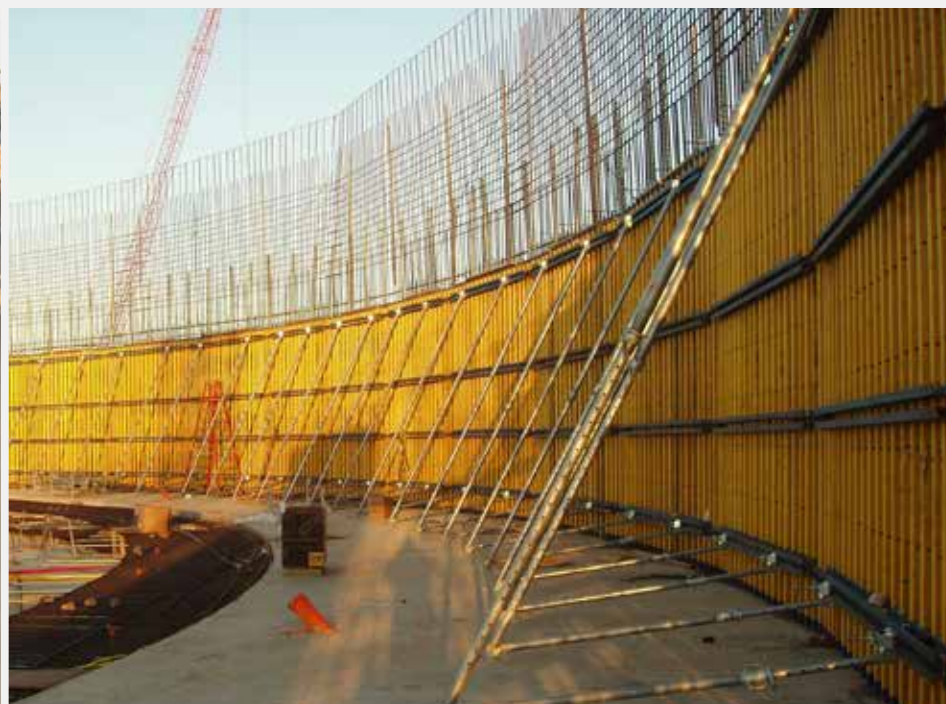


## Up to 16'-0" Height

Type 4 A Frame		
Pour height	Max. Influence	Anchor system
<b>CONCRETE PRESSURE: 800 PSF</b>		
14'-0"	2'-8 3/4"	1 x 20.0 mm
15'-0"	2'-5 1/4"	1 x 20.0 mm
16'-0"	2'-0 3/4"	1 x 20.0 mm
<b>CONCRETE PRESSURE: 600 PSF</b>		
14'-0"	3'-7 1/4"	1 x 20.0 mm



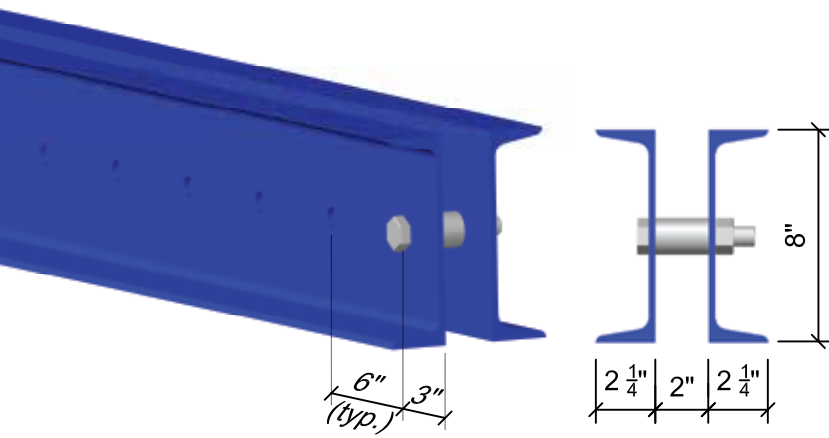






# C8 Steel Walers

\*Up to  
**50%**  
off

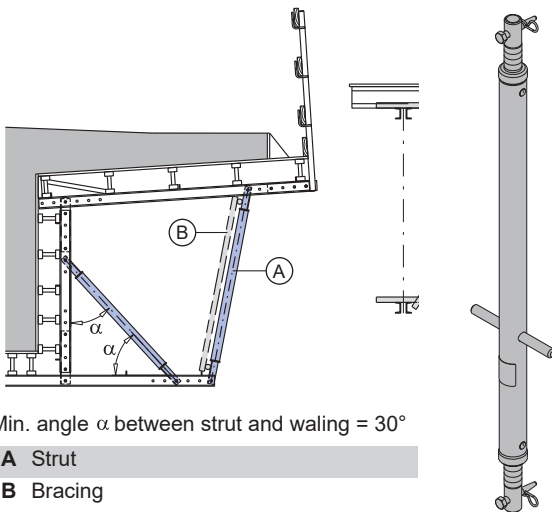


C8x4 Channel assembly	Length: 4'-0"
C8x6 Channel assembly	Length: 6'-0"
C8x8 Channel assembly	Length: 8'-0"
C8x10 Channel assembly	Length: 10'-0"
C8x12 Channel assembly	Length: 12'-0"
C8x14 Channel assembly	Length: 14'-0"
C8x16 Channel assembly	Length: 16'-0"
C8x18 Channel assembly	Length: 18'-0"
C8x20 Channel assembly	Length: 20'-0"
External C8 Splice plate (single)	Length: 4'-0"

Channel Weight: 2 x 11.5 = 23 lbs per ft

# T7 Spindle Struts

\*Up to  
**50%**  
off



Min. angle  $\alpha$  between strut and waling = 30°

A Strut

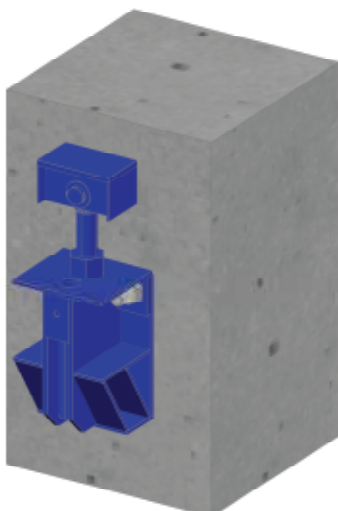
B Bracing

Spindle strut T7 75/110cm	Min Length: 29.5"	Max Length: 43.3"
Spindle strut T7 100/150cm	Min Length: 39.4"	Max Length: 59.0"
Spindle strut T7 150/200cm	Min Length: 59.0"	Max Length: 78.8"
Spindle strut T7 200/250cm	Min Length: 78.8"	Max Length: 98.4"
Spindle strut T7 250/300cm	Min Length: 98.4"	Max Length: 118.1"
Spindle strut T7 305/355cm	Min Length: 120.1"	Max Length: 139.8"

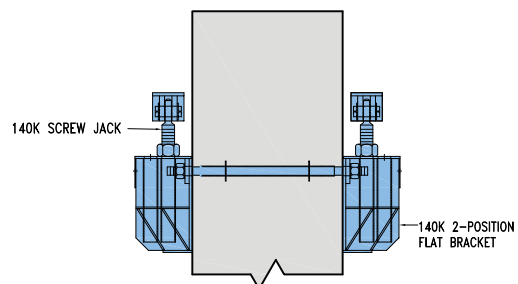
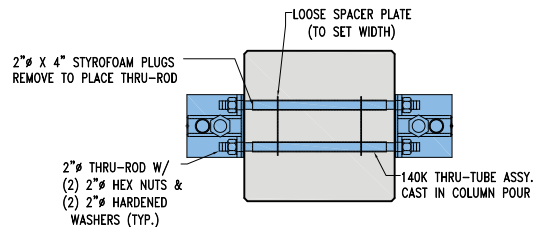
Safe Working Load: up to 15,430 lbs

# 140 Kip Girder Jacks

\*Up to  
**50%**  
off



- Adjustable range: 6"
- Flat walls
- 2 jack positions





# Load-bearing tower Staxo 100

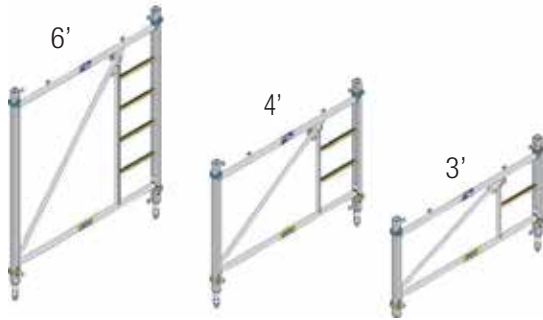




# The high-capacity frame shoring

## Staxo 100 Frames

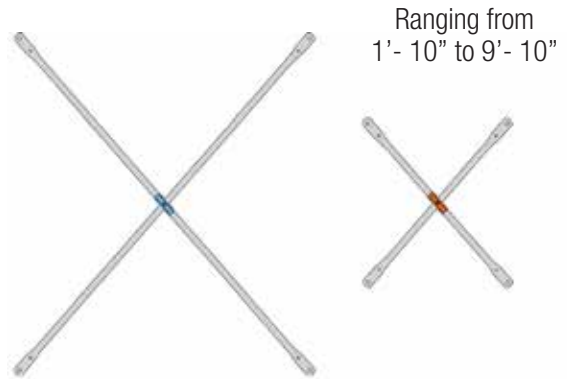
Extremely high leg-load capacity of up to 22.5 kip per leg. Lightweight galvanized steel frames with heights of 3'-0" (0.90 m), 4'-0" (1.20 m) or 6'-0" (1.80 m) - typically requires only 50% material than 10K Shoring



## Diagonal Crosses

Unmistakable length identification provided by color-coded clips and embossed markings

\*Up to  
**50%**  
off



## Staxo 100 Screw Jacks

- Special thread for fast height adjustment and easy load release
- Intergrated handles can be secured to the frames for safe lifting without wire
- Large assortment of standard and heavy-duty Top and Bottom Screw Jacks with up to 4'-3" adjustable range



## Maximum Safety

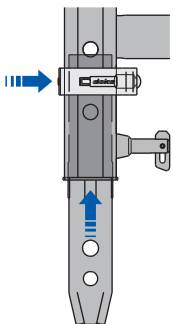
- Clear OSHA compliant safety tie-off points and slip resistant ladder built into every frame
- Integrated 5' x 8' stair units with 25" wide stairs for safe vertical access



## Interlocking frame connection

Integrated couples and spring lock pins, no loose parts.

Shoring towers can be lifted by crane without extra hardware



## Horizontal Assembly

Full height towers (even multiple leg towers) can be pre-assembled horizontally and set in place with only one pick







 [facebook.com/DokaNorthAmerica](https://facebook.com/DokaNorthAmerica)

 [linkedin.com/company/doka](https://linkedin.com/company/doka)

 [twitter.com/doka\\_usa](https://twitter.com/doka_usa)

 [youtube.com/DokaNorthAmerica](https://youtube.com/DokaNorthAmerica)

 [instagram.com/DokaNorthAmerica](https://instagram.com/DokaNorthAmerica)

**New York (Northeast Area)**

Doka USA, Ltd.  
208 Gates Road  
Little Ferry, NJ 07643  
Tel. (877) DOKA-USA

**Chicago (Midwest Area)**

Doka USA, Ltd.  
22901 West Winchester Drive  
Channahon, IL 60410  
Tel. (815) 521-3700

**Atlanta (Southeast Area)**

Doka USA, Ltd.  
105A Boulderbrook Circle  
Lawrenceville, GA 30045  
Tel. (888) 618-4700

**Baltimore (Mid-Atlantic Area)**

Doka USA, Ltd.  
3665 Benson Avenue  
Baltimore, MD 21227  
Tel. (410) 368-8390

**Los Angeles (Far West Area)**

Doka USA, Ltd.  
6901 Central Avenue  
Riverside, CA 92504  
Tel. (951) 509-0023

**Houston (Southwest Area)**

Doka USA, Ltd.  
10822 Mahaffey Road  
Tomball, TX 77375  
Tel. (281) 516-2211

 **NEW LOCATION**

**Miami (Florida Area)**

Doka USA, Ltd.  
1001 NW 12th Terrace  
Pompano Beach, FL 33069  
Tel. (844) 347-DOKA (3652)

**Winnipeg (Manitoba)**

Doka Canada Ltd./Ltee  
Tel. (204) 930-6307

**Toronto (Eastern Canada)**

Doka Canada Ltd./Ltee  
12673 Coleraine Drive  
Bolton, Ontario L7E3B5  
Canada  
Tel. (905) 951-0225

**Edmonton (Northern Alberta)**

Doka Canada Ltd./Ltee  
Tel. (780) 974-3913

 **NEW LOCATION**

**Vancouver (British Columbia)**

Doka Canada Ltd./Ltee  
Doka Canada Ltd./Ltee  
5300-5350 Byrne Road  
Burnaby, BC V5J 3J3  
Tel. (778) 991-9405

**Calgary (Western Canada)**

Doka Canada Ltd./Ltee  
5404 36th Street SE  
Calgary, Alberta T2C 1P1  
Tel. (403) 243-6629