

Ringlock

The modular scaffolding system
from Doka.

doka



ATFAC
COMPLETE SCAFFOLDING SOLUTIONS

PROVIDING

www.doka.com

Ringlock.

The modular scaffolding system from Doka.

With Ringlock, Doka offers an extensive product portfolio of modular working scaffolding for numerous construction applications, making it your high-performance all-round provider of formwork and scaffolding. This tried-and-tested scaffold system solution has been established on the market for decades and is the ideal complement for carrying out reinforcement and formwork operations safely and efficiently.

Ringlock impresses with its customary Doka quality at an attractive price/performance ratio. Thanks to its modular capabilities, the system is flexible and user friendly. With their in-depth construction expertise, our technicians provide you with tailored solutions to match your project requirements, to drive cost optimization and a successful project execution.



One Partner. Multiple Solutions

- A single point of contact for formwork and scaffolding
- Optimally coordinated formwork and scaffolding solutions
- Cost reduction through joint transport



Fully rentable

- High-performance and high-quality rental park for formwork and scaffolding
- Professional & streamlined rental process guarantees simple and smooth handling
- Add-on rental enables the handling of larger construction projects without high investments in new material



Available at short notice

- Reliable supply and fast delivery times thanks to worldwide distribution network
- Large quantities of material available at short notice for sale & rental



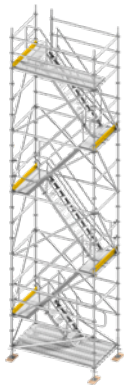
Safe and efficient scaffolding solutions.

Wide range of applications.

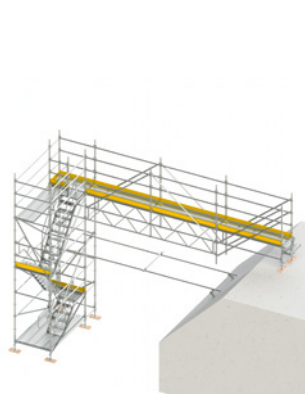
Efficient work on the construction site requires safe and fast working routes. Whether for scaffolding complex buildings or for safe access to the construction site, Ringlock modular scaffolding system offers the optimum solution for almost any requirement.



Rebar Scaffolding



Stair Towers

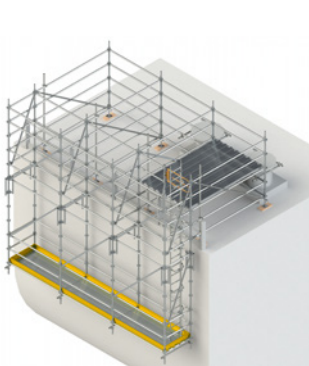


Trench Bridge

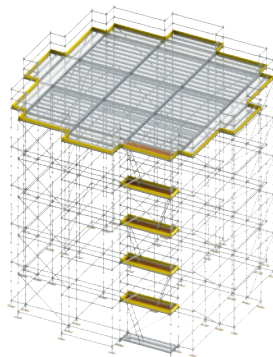


Rolling Scaffolding

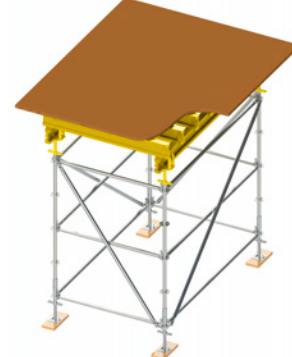
Available for more applications:



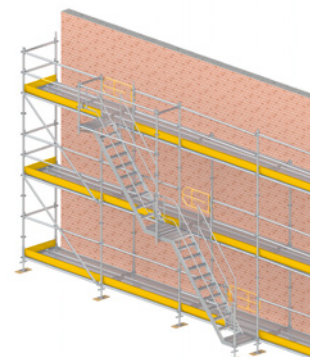
Suspended scaffolding



Birdcage scaffolding



Shoring



Facade scaffolding

Technical Information.

Ringlock

General technical approval	DIBT Z-8.22-992
Tube diameter & Wall thickness	Ø 48.3 x 3.2 mm
Steel grade	S355J0H
Surface protection	hot-dip galvanized
Possible applications	▪ Building & Civil Engineering ▪ Infrastructure
Scaffolding types	▪ Reinforcement scaffold ▪ Suspended Scaffold ▪ Stair Tower Transitions / Trench bridge ▪ Working platforms ▪ Rolling scaffold ▪ Shoring ▪ Facade Scaffold
Steel decks 3.07m and 2.57m	class 4 / class 5 *
Steel decks < 2.07m	class 6 *
Access decks and Stair cases	class 3 *
Available standards	▪ 0.50 m ▪ 1.00 m ▪ 1.50 m ▪ 2.00 m ▪ 2.50 m ▪ 3.00 m ▪ 4.00 m
Available ledgers	▪ 0.15 m ▪ 0.39 m ▪ 0.73 m ▪ 1.04 m ▪ 1.09 m ▪ 1.40 m ▪ 1.57 m ▪ 2.07 m ▪ 2.57 m ▪ 3.07 m
Crane liftable	✓
Cladding	✓

*according to EN 12811-1 Table 3



Ringlock
The modular scaffolding
system from Doka.