

Doka Slipform



Bauwerke gleiten
in Doka-Qualität



Flax Place

Leeds | UK

Flax Place is a pioneering project in Leeds with 300 high-quality flats in two towers, 10 and 14 storeys high. The project combines modern living with a strong focus on sustainability. To protect neighbouring residents, work on the construction site was only permitted from 8am to 4pm. The 4 staircase cores with a height of 40 and 50 metres were nevertheless erected at lightning speed thanks to Doka slipform. The slipform was designed with 3 levels, giving the site team sufficient space for preparatory and finishing work. Flax Place is scheduled for completion in April 2027.

Location: Leeds, UK

Year of completion: 2025

Construction company: Spencer Civil Engineering

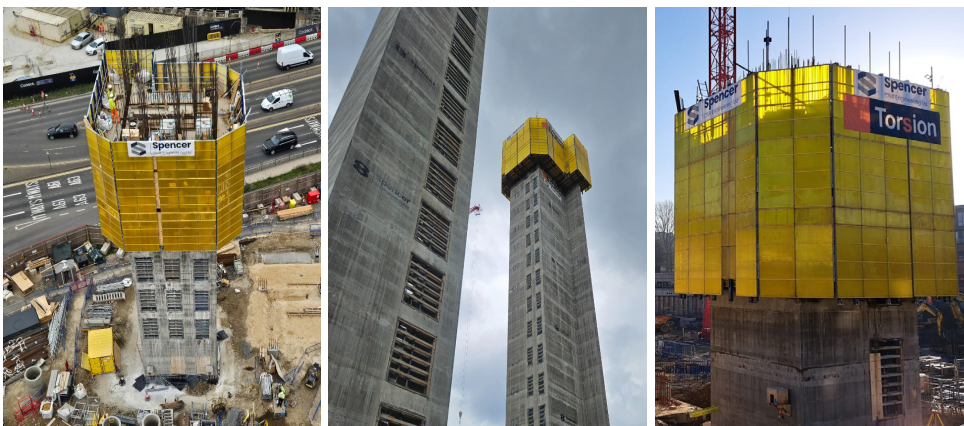
Structure: 4 high-rise cores

Height of structures: 39,5m & 49,7m

Floor space: approx. 6×5,5m

Gliding time: 6 weeks per core

Systems and services used: Doka Slipform, DokaXact, pre-assembling



Contact us for more information:



Arthur Postl

Head of Sales Doka Slipform

T +43 664 6294122

arthur.postl@doka.com

Doka Austria GmbH

Mühlfelderweg 24 | 8055 Graz | Austria



Scan to watch project video (c)Torsion Group!
www.doka-slipform.com

Formwork & Scaffolding.
We make it work.