

**doka**

The Formwork Experts.

# Shaft platform

The climbing formwork for inside-shafts

[www.doka.com](http://www.doka.com)



## The climbing formwork for inside-shafts

The shaft platform plus shaft formwork are quick and easy to reposition, in just one crane cycle.

### High adaptability

to any width of shaft

The telescoping shaft beams allow easy adaptation to any dimension of structure.

### Quick to reposition

in just one crane cycle

Reduced labour and crane times, as

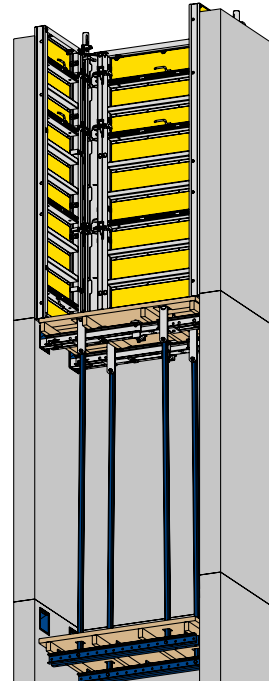
- the entire unit can be repositioned quickly and safely in one piece
- the Framax stripping corner I makes it easy to set up and strike the formwork, with no need for a crane

### Easy to mount

as required

Handy, practical suspension-mounting on the structure, using

- gravity pawl with no expendable anchoring components
- main beam head



**The perfect combination for shafts: Shaft platform plus Framax stripping corner I. The formwork is closed and opened without any crane assistance, simply by turning a spindle with a hammer or reinforcement rod or with the easy-to-handle ratchet.**



**Shaft formwork together with Automatic climbing formwork Xclimb 60 and Framed formwork Framax Xlife in action on the Timelkam combined-cycle gas turbine power plant, Austria**