

**doka**

The Formwork Experts.

# Climbing formwork **MF240**

Crane-lifted formwork for structures of  
any shape and any angle of inclination

[www.doka.com](http://www.doka.com)





## Crane-lifted formwork for structures of any shape and any angle of inclination

---

Climbing formwork MF240 permits controlled, regular working cycles on all tall structures. It is extremely easy to set up, and can be tailored to meet a wide range of different requirements.

### High flexibility

meaning optimum adaptation to any construction project, with only a few individual components

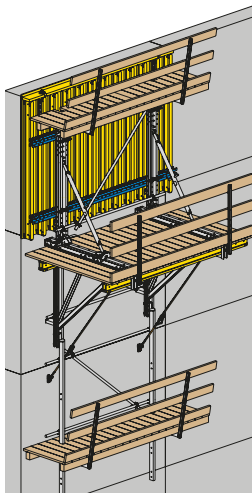
- By turning pressure spindles the climbing formwork MF240 can be perfectly accommodated to structures whose inclination varies from one cycle to the next
- The main platforms can be assembled either on-site or at our nearest warehouse

### Optimum safety

for your site crew

reliably safe-workspaces and workplace access routes ensured by

- the 8'-0" (2.40 m) wide work-platforms, with plenty of space for fast, safe working
- the ability to integrate Ladder System XS into the design



Climbing formwork MF240: The formwork and climbing scaffold are linked together as a single unit which can be repositioned in just one crane-lift. On structures with straight walls, Climbing formwork MF240 permits casting sections that are up to 20 ft. high.

### Easy to operate

saving you time and money

Makes the forming operations fast and efficient, as

- the brackets are modular and assembly requires only 6 pins
- the formwork and platforms are cycled together, in one piece
- the formwork can be adjusted accurately and quickly in all directions
- the working parts are protected from concrete and all parts are galvanized



Based on Doka's decades-long experience of widely differing construction tasks, in many different countries, Climbing formwork MF240 is the crane-jumped solution that covers the entire architectural spectrum.



More information at  
[www.doka.com/MF240](http://www.doka.com/MF240)