



doka

The Formwork Experts.

Dam formwork

The formwork system for
mass concrete structures

www.doka.com



The formwork system for mass concrete structures

The D22 dam formwork stands out for its high load-bearing capacity and operational safety. The system can be tailored to any mass concrete structure.

A practical system

offering great versatility

Good adaptability to the requirements of the structure:

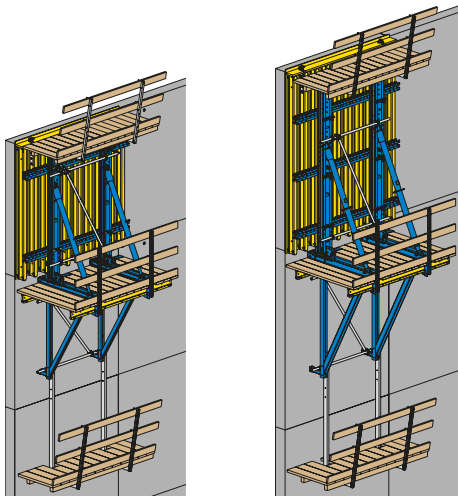
- All Doka framed and timber-beam formwork systems, and also steel formwork, can be used
- The system is designed for normal pour pressure of 1250 psf, when forming a 10'-0" high pour
- The formwork is tiltable, and on the D22 system it can also be rolled back 2' - 6"

Fast working

right from the very first block

The unique constructional design of the D22 dam formwork

- enables it to be used right from the very first block
- reduces the need for modifications, thereby saving time and money



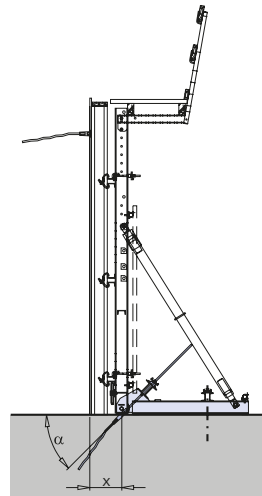
The D22 system with an anchor tensile force of 220 kN (49.5 kips) and for block heights of up to 13'-6".

Workplace safety

has top priority

The working platforms of this dam formwork

- provide high safety and let the crew work at high speed
- can be quickly mounted and deployed as complete units including both pouring platforms and finishing-work platforms
- are generously dimensioned at 8' - 0" (2.40 m)



D22 starter unit.



More information at
www.doka.com/Dam-formwork



Think safety // Doka, for safety's sake

At Doka, safety is written very large – it's what our safety symbol stands for. You'll find it pointing to wherever Doka customers enjoy particularly great safety benefits, both technically and personally, because your safety means a lot to us.