



doka

The Formwork Experts.

Shaft Platform

The climbing formwork
for inside-shafts

www.doka.com

The climbing formwork for inside-shafts

The shaft platform plus shaft formwork are quick and easy to reposition, in just one crane cycle.

High adaptability

to any width of shaft

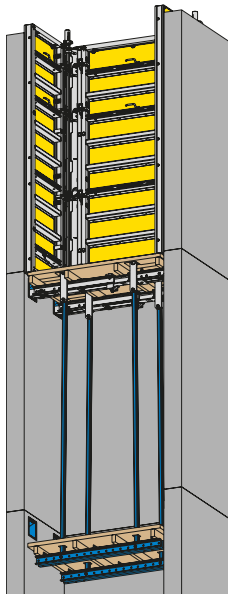
The telescoping shaft beams allow easy adaptation to any dimension of structure.

Quick to reposition

in just one crane cycle

Reduced labor and crane times, as

- the entire unit can be repositioned quickly and safely in one piece
- the Stripping corner makes it easy to set up and strip the formwork, with no need for a crane



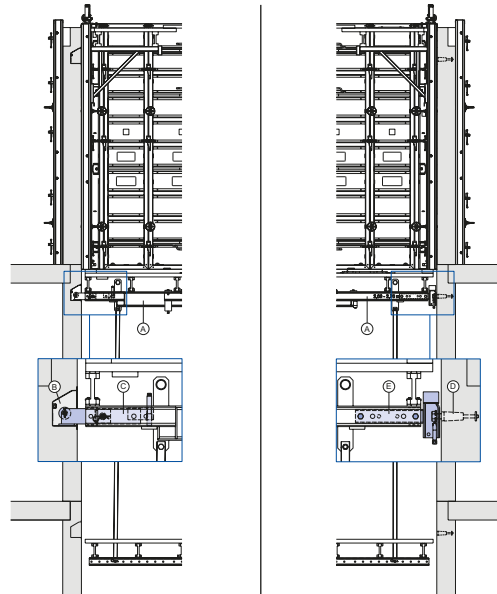
The perfect combination for shafts: Shaft platform plus Stripping corner I. The formwork is stripped and then set up again without any crane assistance, simply by turning a spindle with a hammer or reinforcement rod or with the easy-to-handle ratchet.

Easy to mount

as required

Handy, practical suspension-mounting on the structure, using

- gravity pawl with no expendable anchoring components
- main beam head



Design variants: Shaft platform with pawl-type mounting (left) and Shaft platform with Main beam head for cone-type mounting (right)



More information at
www.doka.com/Shaft-Platform