



Make the invisible visible

DokaXact Load & Pressure

powered by

doka360

When digital finally clicks.

Formwork & Scaffolding.
We make it work.

Make the invisible visible

What happens inside formwork when pouring? Nobody can tell it exactly ... with DokaXact – you can!

DokaXact Load and Pressure sensors enable you to monitor your concrete pouring in real time for more safety, better scheduling and higher quality.



Save Time

- Efficient pouring in all weather conditions
- Convenient visualisation directly on the smartphone
- Monitoring of multiple sensors at the same time



Increase Safety

- Reliable data directly derived from the concrete during the pouring process
- More certainty when utilising SCC or low-carbon concrete
- Digital documentation of all measured data



Enhance Quality

- Higher concrete durability and aesthetics
- Avoidance of formwork deformation
- Prevention of cold joints



Reduce Costs

- Optimum utilisation of staff, formwork and other material
- Competitive advantage on (future) project(s)

Fields of application

Just like our formwork the DokaXact sensors can be used on a wide range of concrete construction sites such as high-rise buildings, (non) residential, infrastructure and energy projects. Anywhere mission-critical data is needed DokaXact will enable you to get the most out of your project.



Tall walls & columns



Tall single-sided walls



Projects with critical anchor loads



Tunnel projects

Monitoring anchor load and fresh concrete pressure

DokaXact can be used to monitor both the anchor load and the fresh concrete pressure. The DokaXact sensors enable visibility of the information on a smartphone, to support efficient and safe controls during the concreting process.

DokaXact Load sensor



Compact wireless load cell

- Installed directly on the tie rod
- Usable for the most common tie rod systems

DokaXact Pressure sensor



Compact wireless sensor

- Installed directly in the formwork plywood
- Adjustable to any plywood thickness from 9 to 27 mm



Both sensors are robust, water and dust resistant and connect via Bluetooth with the user's smartphone.

Scan here for videos and downloads



Success story

Sanitary Trunk Sewer Shaft DS-4

Mississauga, Ontario, Canada



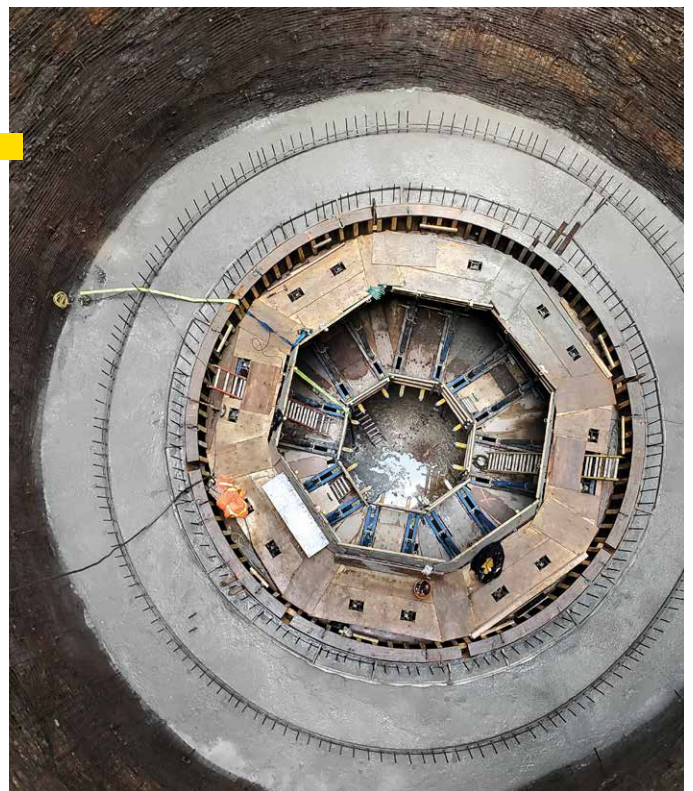
Reduction of pour time by 5 hours

Challenge

- Finding the right pouring speed, as formwork withstands only low fresh concrete pressure
- No experience with such a low permitted pressure

Achievement

- Speed of placing = 0.50 m/h
- 5 hours earlier completion than planned



DokaXact app & web portal

doka

Xact

Monitoring of the concreting process and documentation

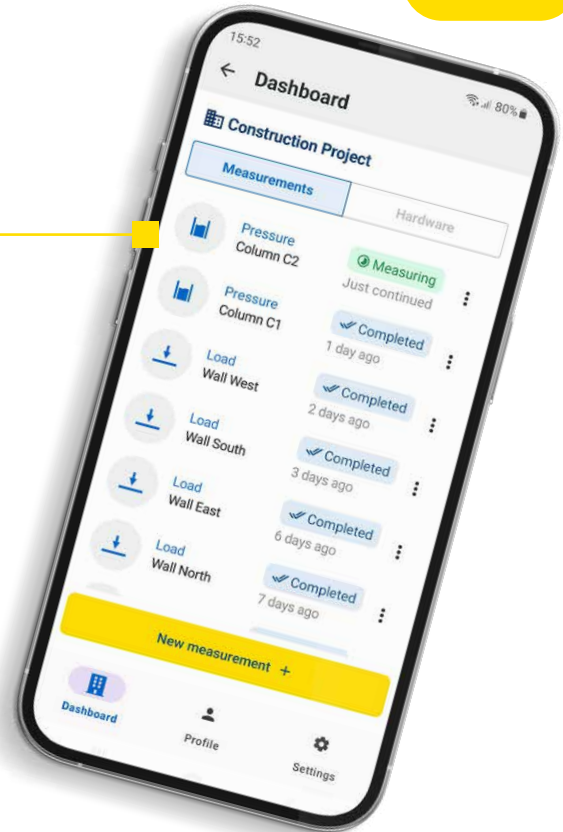
The mobile app

displays the fresh concrete pressure or anchor load in real time, enabling precise control of the concreting process. This prevents the limit values from being exceeded and maintains safety and efficiency during concreting.

Get the
DokaXact app
on your device

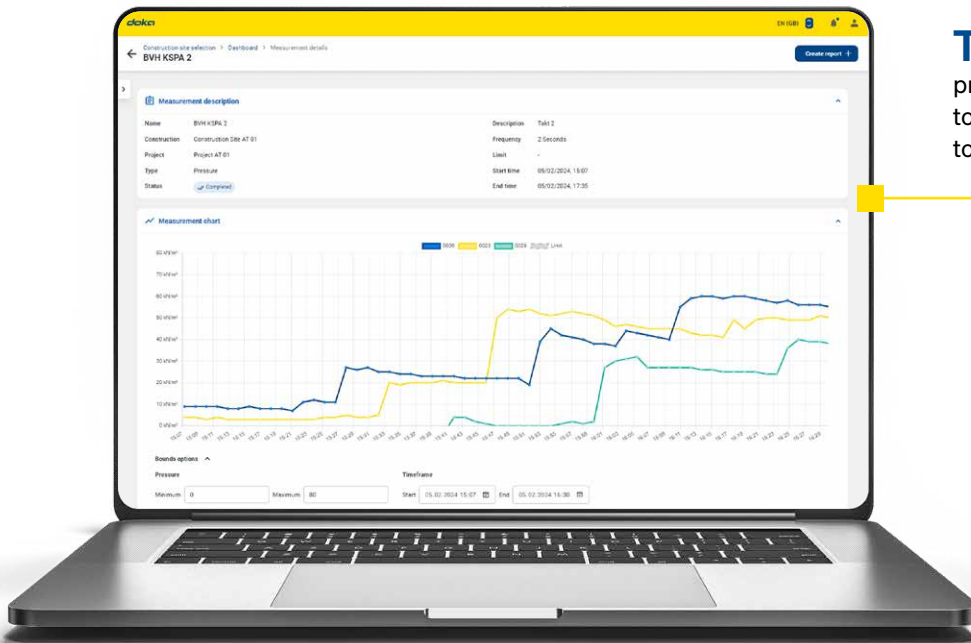


Google Play



The web portal

provides detailed information and access to comprehensive documentation at the touch of a button, at any time.



/dokacanada



/doka



/company/doka



/dokacanada



/doka_international

Doka Canada Ltd. | Toronto | 12673 Coleraine Drive L7E 3B5 Bolton, Ontario | T 905-951-0225 | Calgary | 5404 – 36th Street S.E. T2C 1P1 Calgary, AB | T 403 243 6629
Montreal | 1404 Boulevard Lionel Boulet J3X 1P7 Varennes, QC | T 450 652 7555 | Vancouver | 9924 River Road V4G 1B5 Delta, BC | T 778 991 9405
canada@doka.com | www.doka.ca