



Doka Library for Revit

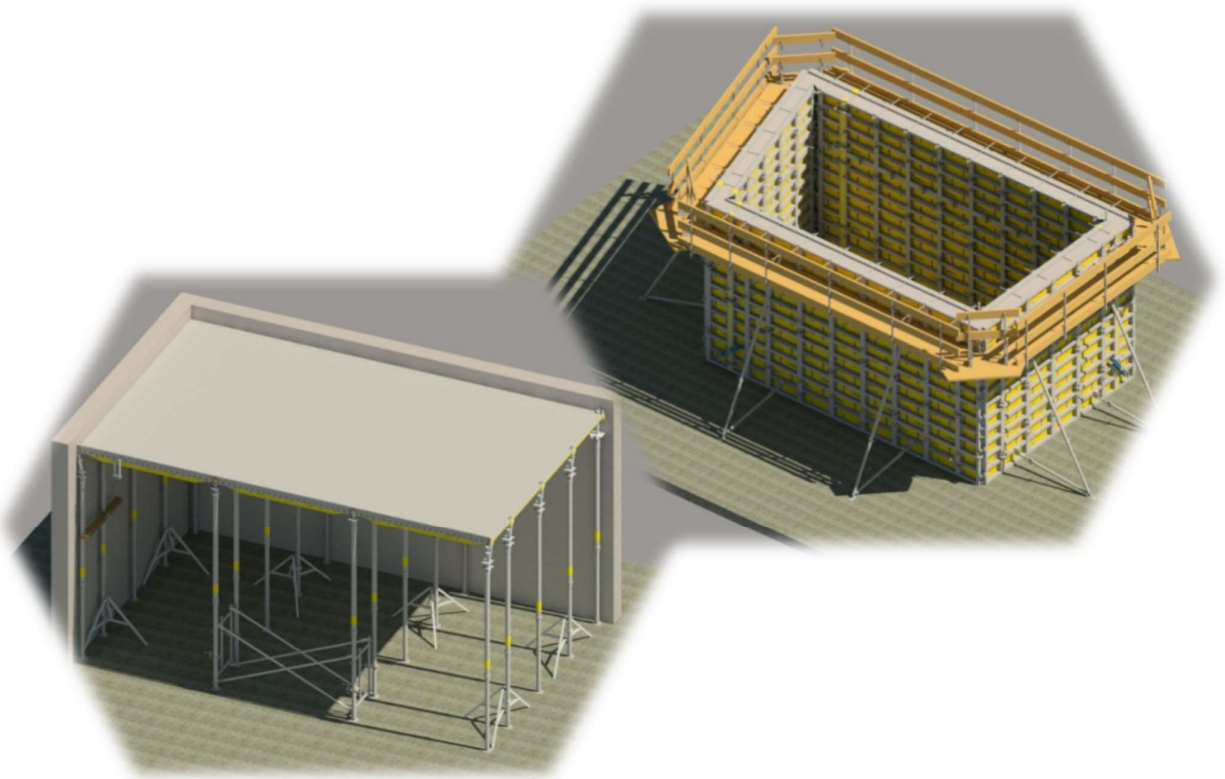
User manual

CC VDC/BIM

November 2018

User manual

Dokadek & Framax Xlife Families



*Integrated formwork concepts on your virtual site,
boosting productivity on your real site.*



Doka Library for Revit

User manual

CC VDC/BIM

November 2018

Edition 11/2018

Doka GmbH

Competence Center VDC/BIM

Josef Umdasch Platz 1

3300 Amstetten

Austria

bim.support@doka.com

www.doka.com



Doka Library for Revit

User manual

CC VDC/BIM

November 2018

Content List

1. General	4
2. Doka project templates.....	5
2.1 Browser organization	6
2.2 Content Overview	7
3. Doka Library for Revit.....	8
3.1 Modeling with Doka Families	9
3.2 Dokadek.....	10
3.3 Framax Xlife	10
4. Terms and Conditions.....	11
5. Additional Information	11



Doka Library for Revit

User manual

CC VDC/BIM

November 2018

1. General

This document describes the content and the functionality of the virtual Doka products for Dokadek and Framax Xlife in Revit. The Families are placed in a project template for each formwork system, which includes all necessary components for modeling as well as annotation tags and dimensions to create the project documentation.

The provided Revit solution is created under consideration of following principles:

- Direct use without any installation
- Parametric design of multi-type families to improve modeling productivity
- Functionality according to Doka User Information



Doka Library for Revit

User manual

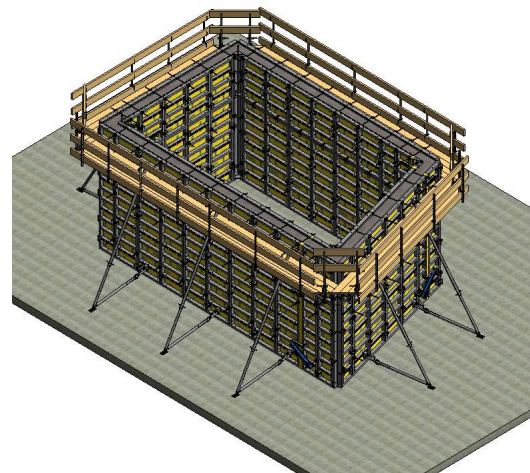
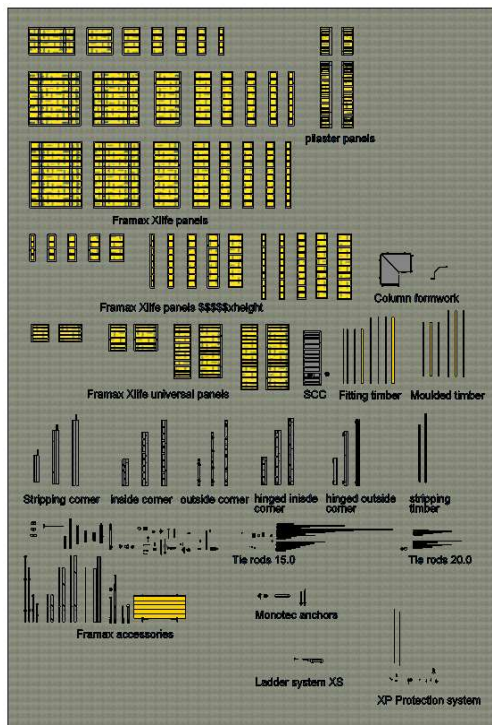
CC VDC/BIM

November 2018

2. Doka project templates

The library for each formwork system is loaded in a prepared project template for Revit. The components are placed on a floor to give the user a quick overview about the provided 3D content.

Furthermore, a placing example for the specific formwork system is shown in this template. This should give an idea about the usage of the families.



Formwork components and a placing example of the Framax Xlife families

Beside the formwork components, this template also includes annotation families like tags and dimensions. Also the line styles have been customized for optimized project documentation.

The project templates with the loaded families contain:

- Formwork objects and annotation symbols
- Custom View definitions and a legend for dimension-/ line styles and annotation tags
- Predefined project documentation based on 2D-drawings & schedules for quantification
- Example for execution drawing



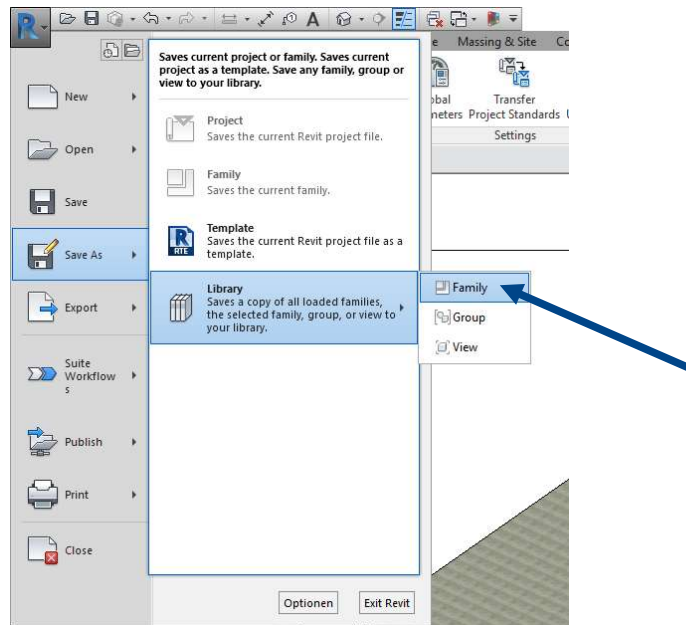
Doka Library for Revit

User manual

CC VDC/BIM

November 2018

In the case you have already set up your own project templates, you can also export the formwork library and reload the families in your project file.



2.1 Browser organization

1 View definitions for floor plans, 3D views, elevations and sections

2 Legend of used Doka standards for annotations, line styles and dimensions

3 Schedules for all respectively system specific formwork components. Sheet- and View lists

4 Sheets for Welcome page and example of execution drawing for project documentation



Doka Library for Revit

User manual

CC VDC/BIM

November 2018

2.2 Content Overview

View definitions

Legend

Dimension Styles

Doka_Linear_Baseline

Doka_Linear_Continuous

Doka_Angular

Doka_Radial

Doka_Diameter

Doka_Text_3mm

Doka_Text_5mm

Doka_Text_3mm_Underline

Doka_Text_5mm_Underline

Line Styles

Doka_1_Continuous

Doka_1_DA

Doka_1_DASHORT

Doka_1_OD

Doka_1_DDSHORT

Annotation Tags

Doka_Article_Number

Doka_Assembly_Code

Doka_Description

Doka_Number

Doka_Description

Sheets & Schedules

DESCRIPTION:
This is the Dokadek 20/30 family project template (11.2018)

Content:

- Doka Roof Families
- All product families are placed on a slab area
- Planning schedule for Doka families, sheets & viewlists
- Sheets schedule
- Productivity annotation families shown in legend view
- Generic Model Tag multiples for tagging Doka families in sheets
- Naming convention for all views

Additional Comments:

- Only project schedule for sheets and schedules
- You find all the Doka Families in the project
- Structure under Formwork - Elements Model
- Don't miss the Generic Model Tag under Families - Annotation Symbols

AUTODESK

WELCOME PAGE

<DD_Doka_All Doka Families>									
ID	A	B	C	D	E	F	G	H	
ID	Art. No.	Description	Size	Family		Doka_Assembly_Code	Class	Category	Class Comment
1	16019000	Outadek wall clamp	Doka_16019000_Outadek wall clamp_R17_GMF	Doka_16019000_Outadek wall clamp_R17_GMF					New Construction
2	16019000	Outadek 20 wall clamp	Doka_16019000_Outadek 20 wall clamp_R17_GMF	Doka_16019000_Outadek 20 wall clamp_R17_GMF					New Construction
3	16042000	The rod 20 5mm non-treated 5.0m	Doka_16042000_The rod 20 5mm non-treated 5.0m_R17_GMF	Doka_16042000_The rod 20 5mm non-treated 5.0m_R17_GMF					New Construction
4	16042000	The rod 20 5mm non-treated 4.5m	Doka_16042000_The rod 20 5mm non-treated 4.5m_R17_GMF	Doka_16042000_The rod 20 5mm non-treated 4.5m_R17_GMF					New Construction
5	16042000	The rod 20 5mm non-treated 3.5m	Doka_16042000_The rod 20 5mm non-treated 3.5m_R17_GMF	Doka_16042000_The rod 20 5mm non-treated 3.5m_R17_GMF					New Construction
6	16042000	The rod 20 5mm non-treated 2.5m	Doka_16042000_The rod 20 5mm non-treated 2.5m_R17_GMF	Doka_16042000_The rod 20 5mm non-treated 2.5m_R17_GMF					New Construction
7	16042000	The rod 20 5mm galvanized 5.0m	Doka_16042000_The rod 20 5mm galvanized 5.0m_R17_GMF	Doka_16042000_The rod 20 5mm galvanized 5.0m_R17_GMF					New Construction
8	16042000	The rod 20 5mm galvanized 4.5m	Doka_16042000_The rod 20 5mm galvanized 4.5m_R17_GMF	Doka_16042000_The rod 20 5mm galvanized 4.5m_R17_GMF					New Construction
9	16042000	The rod 20 5mm galvanized 3.5m	Doka_16042000_The rod 20 5mm galvanized 3.5m_R17_GMF	Doka_16042000_The rod 20 5mm galvanized 3.5m_R17_GMF					New Construction
10	16042000	The rod 20 5mm galvanized 2.5m	Doka_16042000_The rod 20 5mm galvanized 2.5m_R17_GMF	Doka_16042000_The rod 20 5mm galvanized 2.5m_R17_GMF					New Construction
11	16042000	The rod 20 5mm galvanized 1.5m	Doka_16042000_The rod 20 5mm galvanized 1.5m_R17_GMF	Doka_16042000_The rod 20 5mm galvanized 1.5m_R17_GMF					New Construction
12	16042000	The rod 20 5mm galvanized 0.5m	Doka_16042000_The rod 20 5mm galvanized 0.5m_R17_GMF	Doka_16042000_The rod 20 5mm galvanized 0.5m_R17_GMF					New Construction
13	16042000	The rod 15 5mm galvanized 5.0m	Doka_16042000_The rod 15 5mm galvanized 5.0m_R17_GMF	Doka_16042000_The rod 15 5mm galvanized 5.0m_R17_GMF					New Construction
14	16042000	The rod 15 5mm galvanized 4.5m	Doka_16042000_The rod 15 5mm galvanized 4.5m_R17_GMF	Doka_16042000_The rod 15 5mm galvanized 4.5m_R17_GMF					New Construction
15	16042000	The rod 15 5mm galvanized 3.5m	Doka_16042000_The rod 15 5mm galvanized 3.5m_R17_GMF	Doka_16042000_The rod 15 5mm galvanized 3.5m_R17_GMF					New Construction
16	16042000	The rod 15 5mm galvanized 2.5m	Doka_16042000_The rod 15 5mm galvanized 2.5m_R17_GMF	Doka_16042000_The rod 15 5mm galvanized 2.5m_R17_GMF					New Construction
17	16042000	The rod 15 5mm galvanized 1.5m	Doka_16042000_The rod 15 5mm galvanized 1.5m_R17_GMF	Doka_16042000_The rod 15 5mm galvanized 1.5m_R17_GMF					New Construction
18	16042000	The rod 15 5mm galvanized 0.5m	Doka_16042000_The rod 15 5mm galvanized 0.5m_R17_GMF	Doka_16042000_The rod 15 5mm galvanized 0.5m_R17_GMF					New Construction
19	16042000	The rod 10 5mm galvanized 5.0m	Doka_16042000_The rod 10 5mm galvanized 5.0m_R17_GMF	Doka_16042000_The rod 10 5mm galvanized 5.0m_R17_GMF					New Construction
20	16042000	The rod 10 5mm galvanized 4.5m	Doka_16042000_The rod 10 5mm galvanized 4.5m_R17_GMF	Doka_16042000_The rod 10 5mm galvanized 4.5m_R17_GMF					New Construction
21	16042000	The rod 10 5mm galvanized 3.5m	Doka_16042000_The rod 10 5mm galvanized 3.5m_R17_GMF	Doka_16042000_The rod 10 5mm galvanized 3.5m_R17_GMF					New Construction
22	16042000	The rod 10 5mm galvanized 2.5m	Doka_16042000_The rod 10 5mm galvanized 2.5m_R17_GMF	Doka_16042000_The rod 10 5mm galvanized 2.5m_R17_GMF					New Construction
23	16042000	The rod 10 5mm galvanized 1.5m	Doka_16042000_The rod 10 5mm galvanized 1.5m_R17_GMF	Doka_16042000_The rod 10 5mm galvanized 1.5m_R17_GMF					New Construction
24	16042000	The rod 10 5mm galvanized 0.5m	Doka_16042000_The rod 10 5mm galvanized 0.5m_R17_GMF	Doka_16042000_The rod 10 5mm galvanized 0.5m_R17_GMF					New Construction
25	16042000	The rod 5 5mm galvanized 5.0m	Doka_16042000_The rod 5 5mm galvanized 5.0m_R17_GMF	Doka_16042000_The rod 5 5mm galvanized 5.0m_R17_GMF					New Construction
26	16042000	The rod 5 5mm galvanized 4.5m	Doka_16042000_The rod 5 5mm galvanized 4.5m_R17_GMF	Doka_16042000_The rod 5 5mm galvanized 4.5m_R17_GMF					New Construction
27	16042000	The rod 5 5mm galvanized 3.5m	Doka_16042000_The rod 5 5mm galvanized 3.5m_R17_GMF	Doka_16042000_The rod 5 5mm galvanized 3.5m_R17_GMF					New Construction
28	16042000	The rod 5 5mm galvanized 2.5m	Doka_16042000_The rod 5 5mm galvanized 2.5m_R17_GMF	Doka_16042000_The rod 5 5mm galvanized 2.5m_R17_GMF					New Construction
29	16042000	The rod 5 5mm galvanized 1.5m	Doka_16042000_The rod 5 5mm galvanized 1.5m_R17_GMF	Doka_16042000_The rod 5 5mm galvanized 1.5m_R17_GMF					New Construction
30	16042000	The rod 5 5mm galvanized 0.5m	Doka_16042000_The rod 5 5mm galvanized 0.5m_R17_GMF	Doka_16042000_The rod 5 5mm galvanized 0.5m_R17_GMF					New Construction
31	16042000	Diagonal cross 1.175	Doka_16042000_Diagonal cross 1.175_0205_R17_GMF	Doka_16042000_Diagonal cross 1.175_0205_R17_GMF					New Construction
32	16042000	Diagonal cross 1.175_0205_R17_GMF	Doka_16042000_Diagonal cross 1.175_0205_R17_GMF	Doka_16042000_Diagonal cross 1.175_0205_R17_GMF					New Construction
33	16042000	Diagonal cross 1.175_0205_R17_GMF	Doka_16042000_Diagonal cross 1.175_0205_R17_GMF	Doka_16042000_Diagonal cross 1.175_0205_R17_GMF					New Construction
34	16042000	Diagonal cross 1.175_0205_R17_GMF	Doka_16042000_Diagonal cross 1.175_0205_R17_GMF	Doka_16042000_Diagonal cross 1.175_0205_R17_GMF					New Construction
35	16042000	Diagonal cross 1.175_0205_R17_GMF	Doka_16042000_Diagonal cross 1.175_0205_R17_GMF	Doka_16042000_Diagonal cross 1.175_0205_R17_GMF					New Construction
36	16042000	Diagonal cross 1.175_0205_R17_GMF	Doka_16042000_Diagonal cross 1.175_0205_R17_GMF	Doka_16042000_Diagonal cross 1.175_0205_R17_GMF					New Construction
37	16042000	Diagonal cross 1.175_0205_R17_GMF	Doka_16042000_Diagonal cross 1.175_0205_R17_GMF	Doka_16042000_Diagonal cross 1.175_0205_R17_GMF					New Construction
38	16042000	Diagonal cross 1.175_0205_R17_GMF	Doka_16042000_Diagonal cross 1.175_0205_R17_GMF	Doka_16042000_Diagonal cross 1.175_0205_R17_GMF					New Construction
39	16042000	Diagonal cross 1.175_0205_R17_GMF	Doka_16042000_Diagonal cross 1.175_0205_R17_GMF	Doka_16042000_Diagonal cross 1.175_0205_R17_GMF					New Construction
40	16042000	Diagonal cross 1.175_0205_R17_GMF	Doka_16042000_Diagonal cross 1.175_0205_R17_GMF	Doka_16042000_Diagonal cross 1.175_0205_R17_GMF					New Construction
41	16042000	Diagonal cross 1.175_0205_R17_GMF	Doka_16042000_Diagonal cross 1.175_0205_R17_GMF	Doka_16042000_Diagonal cross 1.175_0205_R17_GMF					New Construction
42	16042000	Diagonal cross 1.175_0205_R17_GMF	Doka_16042000_Diagonal cross 1.175_0205_R17_GMF	Doka_16042000_Diagonal cross 1.175_0205_R17_GMF					New Construction
43	16042000	Diagonal cross 1.175_0205_R17_GMF	Doka_16042000_Diagonal cross 1.175_0205_R17_GMF	Doka_16042000_Diagonal cross 1.175_0205_R17_GMF					New Construction
44	16042000	Diagonal cross 1.175_0205_R17_GMF	Doka_16042000_Diagonal cross 1.175_0205_R17_GMF	Doka_16042000_Diagonal cross 1.175_0205_R17_GMF					New Construction
45	16042000	Diagonal cross 1.175_0205_R17_GMF	Doka_16042000_Diagonal cross 1.175_0205_R17_GMF	Doka_16042000_Diagonal cross 1.175_0205_R17_GMF					New Construction
46	16042000	Diagonal cross 1.175_0205_R17_GMF	Doka_16042000_Diagonal cross 1.175_0205_R17_GMF	Doka_16042000_Diagonal cross 1.175_0205_R17_GMF					New Construction
47	16042000	Diagonal cross 1.175_0205_R17_GMF	Doka_16042000_Diagonal cross 1.175_0205_R17_GMF	Doka_16042000_Diagonal cross 1.175_0205_R17_GMF					New Construction
48	16042000	Diagonal cross 1.175_0205_R17_GMF	Doka_16042000_Diagonal cross 1.175_0205_R17_GMF	Doka_16042000_Diagonal cross 1.175_0205_R17_GMF					New Construction
49	16042000	Diagonal cross 1.175_0205_R17_GMF	Doka_16042000_Diagonal cross 1.175_0205_R17_GMF	Doka_16042000_Diagonal cross 1.175_0205_R17_GMF					New Construction
50	16042000	Diagonal cross 1.175_0205_R17_GMF	Doka_16042000_Diagonal cross 1.175_0205_R17_GMF	Doka_16042000_Diagonal cross 1.175_0205_R17_GMF					New Construction
51	16042000	Diagonal cross 1.175_0205_R17_GMF	Doka_16042000_Diagonal cross 1.175_0205_R17_GMF	Doka_16042000_Diagonal cross 1.175_0205_R17_GMF					New Construction
52	16042000	Diagonal cross 1.175_0205_R17_GMF	Doka_16042000_Diagonal cross 1.175_0205_R17_GMF	Doka_16042000_Diagonal cross 1.175_0205_R17_GMF					New Construction
53	16042000	Diagonal cross 1.175_0205_R17_GMF	Doka_16042000_Diagonal cross 1.175_0205_R17_GMF	Doka_16042000_Diagonal cross 1.175_0205_R17_GMF					New Construction
54	16042000	Diagonal cross 1.175_0205_R17_GMF	Doka_16042000_Diagonal cross 1.175_0205_R17_GMF	Doka_16042000_Diagonal cross 1.175_0205_R17_GMF					New Construction
55	16042000	Diagonal cross 1.175_0205_R17_GMF	Doka_16042000_Diagonal cross 1.175_0205_R17_GMF	Doka_16042000_Diagonal cross 1.175_0205_R17_GMF					New Construction
56	16042000	Diagonal cross 1.175_0205_R17_GMF	Doka_16042000_Diagonal cross 1.175_0205_R17_GMF	Doka_16042000_Diagonal cross 1.175_0205_R17_GMF					New Construction
57	16042000	Diagonal cross 1.175_0205_R17_GMF	Doka_16042000_Diagonal cross 1.175_0205_R17_GMF	Doka_16042000_Diagonal cross 1.175_0205_R17_GMF					New Construction
58	16042000	Diagonal cross 1.175_0205_R17_GMF	Doka_16042000_Diagonal cross 1.175_0205_R17_GMF	Doka_16042000_Diagonal cross 1.175_0205_R17_GMF					New Construction
59	16042000	Diagonal cross 1.175_0205_R17_GMF	Doka_16042000_Diagonal cross 1.175_0205_R17_GMF	Doka_16042000_Diagonal cross 1.175_0205_R17_GMF					New Construction
60	16042000	Diagonal cross 1.175_0205_R17_GMF	Doka_16042000_Diagonal cross 1.175_0205_R17_GMF	Doka_16042000_Diagonal cross 1.175_0205_R17_GMF					New Construction

Tip: To use the system specific schedules "01_Doka (Formwork System)" set the filter to the required formwork group.



Doka Library for Revit

User manual

CC VDC/BIM

November 2018

3. Doka Library for Revit

The Families are organized in the project browser and based on the category “generic models”. To simplify the placing of the components, different subcategories were chosen:

- Generic model
- Generic model face based
- Generic model line based

The families are organized in the project browser and categorized in single type-, multi type- and nested families with sub components.

Single type families have stated the article number in the family name whereas multi type families have the article number in the type name.

1

2

3

Multi-type family Framax Xlife panel

Tip: Use the Revit “search” function for faster searching!

Single-type family Handrail post 1.00m



Doka Library for Revit

User manual

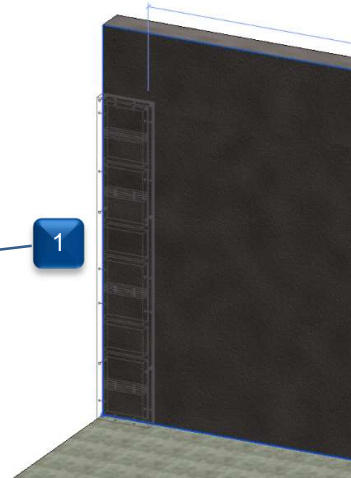
CC VDC/BIM

November 2018

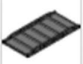
3.1 Modeling with Doka Families

The families are created in order to simplify manual placing of the components.

Tip: If you use a set of components frequently, use the Revit grouping function for faster handling.



Snapped edge of the structural wall

Properties	
 Doka_Dokadek 30 panels_R17_GMF Doka_586501000_Dokadek panel 1.22x2.44m_R17_GMF	
Generic Models (1) Edit Type	
Constraints	
Host	Floor : STB 25.0
Elevation	0.0
Construction	
Doka_Assembly_Code	
Doka_Item_Available_for_Rental	<input checked="" type="checkbox"/>
Doka_Item_Sale_only	<input type="checkbox"/>
Doka_Pre-Assembly_Code	
Doka_User_Information	https://www.doka.com/en/solution...
Dimensions	
Doka_Area	0.000 m ²
Doka_Height	171.5
Doka_Length	2438.4
Doka_Weight	49.900 kg
Doka_Width	1219.4
Volume	0.218 m ³
Identity Data	
Doka_Article_Number	586501000
Doka_Description	Dokadek panel 1.22x2.44m
Doka_Main_Productgroup	Panel floor formwork
Doka_Main_Productgroup_Number	76
Doka_Itemgroup	Dokadek 30 panels
Doka_Rental_Cost	0.00
Doka_Sale_Cost	0.00
Doka_Identity_Copyright	Doka GmbH
Image	
Comments	
Mark	
Phasing	
Phase Created	New Construction
Phase Demolished	None
Visibility	
2D	<input checked="" type="checkbox"/>
3D	<input checked="" type="checkbox"/>
Other	
Schedule Level	

2

Assembly code for specific formwork assemblies, sale only indication and the pre-assembly code

3

Dimensions of formwork articles

4

Formwork specific information

5

Visibility settings of formwork family



Doka Library for Revit

User manual

CC VDC/BIM

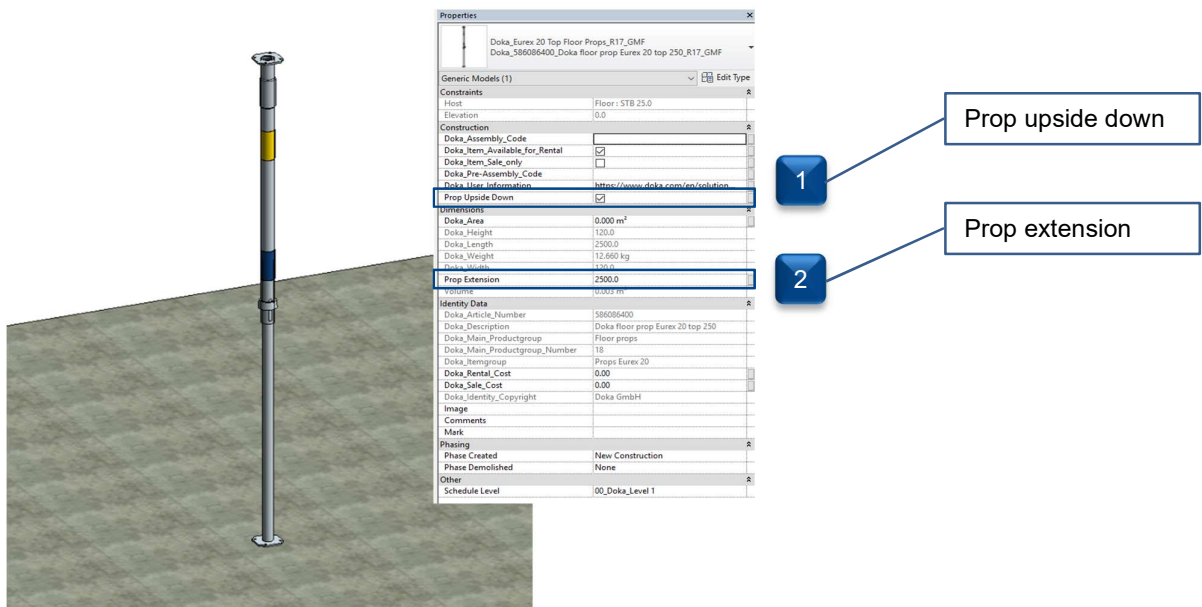
November 2018

doka

The Formwork Experts.

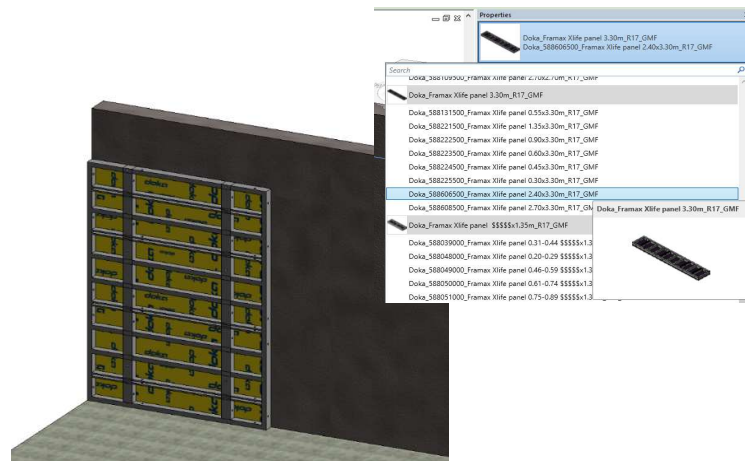
3.2 Dokadek

The general placing of the Dokadek families is considered to be done in the ceiling view, starting from top (panel). All further components follow this modeling rule.



3.3 Framax Xlife

The general placing of the Framax Xlife families is considered to be done in the 3D view or elevations, starting from the concrete surface of the structure. All further components follow this modeling rule.



Tip: Use the nesting of tie rods and super plates for efficient placing



Doka Library for Revit

User manual

CC VDC/BIM

November 2018

4. Terms and Conditions

General Terms and Conditions

Doka Terms and Conditions for the Use of Doka Planning Software (B2B)

<https://www.doka.com/GTC>

5. Additional Information

More information about Doka and the right planning of described products you can find under

<https://www.doka.com>

<https://www.doka.com/downloadcenter>

<https://www.doka.com/Apps>

For additional help regarding Doka Library for Revit please contact Competence Center VDC/BIM by email bim.support@doka.com.