



# Slipform





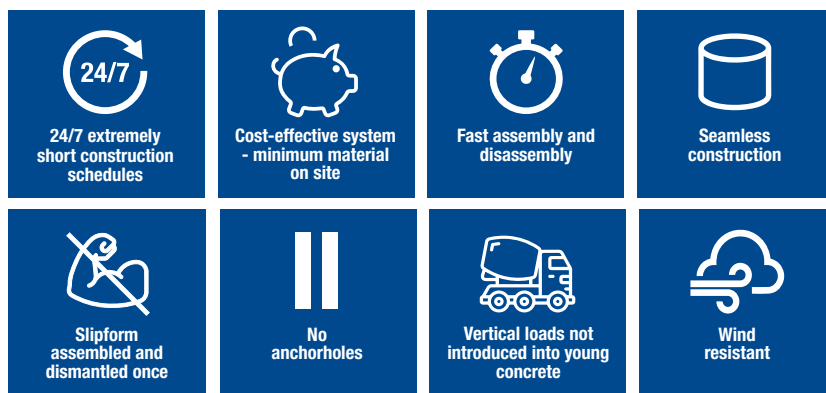
## Doka-Slipform: Slip-forming structures in Doka quality

We make your project slip ahead smoothly! The interplay of research drive and many years' experience has created a competence centre for slip formwork at Doka. This construction method, with the formwork system hydraulically climbing itself upward, enables concreting to continue all day, every day, 24/7. Rate of rise can be up to 5-10 metres a day, so progress on your monolithic structure is extremely cost-efficient and fast.

## No-worries package

Doka undertakes planning, commissioning and operations, including quality monitoring and removal of the slip formwork on completion of the structure. Our formwork instructors go on site to ensure smooth and safe deployment of the formwork. Every instructor is a specially trained and experienced practitioner, contributing to efficient progress on the build.

## Your benefits



**Want to find out more about building with slip formwork?**

Considering a project that might need slip formwork?

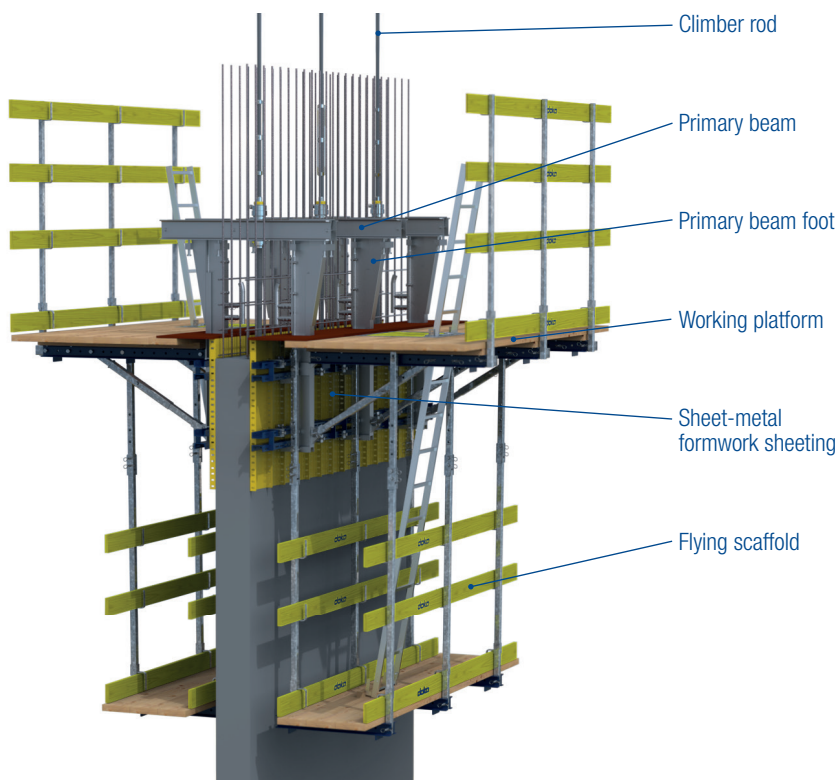
**Go ahead and get in touch with us!**



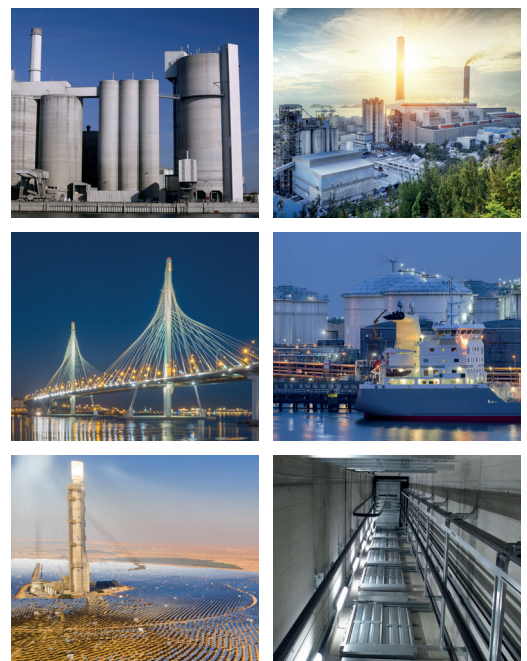

**Bernd Reitmaier**  
Key Account Manager

T +43 664 88836206 | [bernd.reitmaier@doka.com](mailto:bernd.reitmaier@doka.com)

## The system



## Areas of application



Silos • High-rack warehouses • Bridge suspension towers • LNG tanks/oil and gas industry • Solar power towers • Stairwell shafts/highrise cores/elevator shafts • Caissons/cofferdams