



doka

Alignment strut **DokaRex**

Fast, light and precise.

Formwork & Scaffolding.
We make it work.

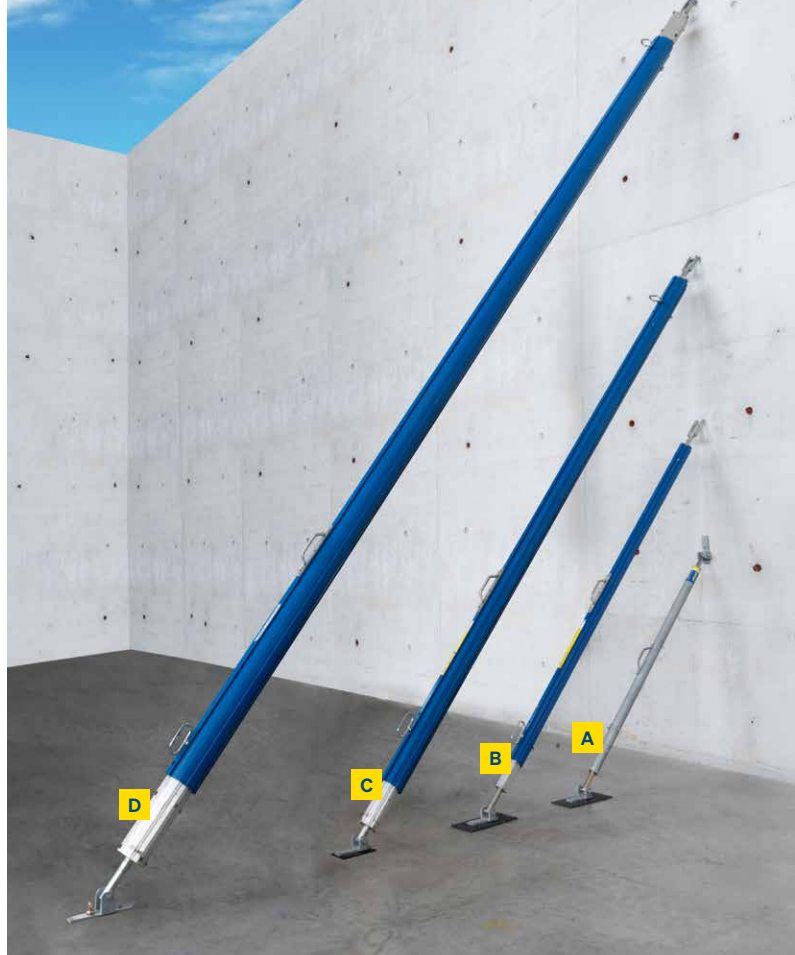
DokaRex

The fast, light and accurate alignment strut.

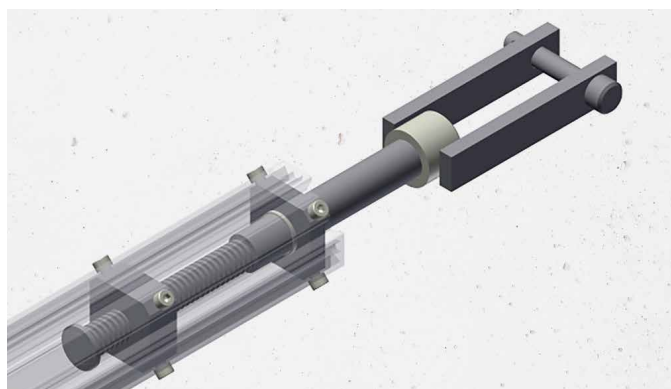
With the ready-to-use DokaRex alignment strut you can position your walls quickly, easily and without major effort. A covered precision thread enables accurate adjustment and the range of lengths from 6ft to 33.5ft is covered gaplessly with only 4 strut types.

- A** DokaRex 305 (steel)
- B** DokaRex 450 (aluminium)
- C** DokaRex 750 (aluminium)
- D** DokaRex 1020 (aluminium)

One steel strut and three aluminium struts make up the series of DokaRex. Depending on the version, the struts telescope at one or both ends.



DokaRex is delivered ready for use to your site.



The thread is covered, so it is protected against dirt. Designed for a long service life, it also minimises maintenance.

Article no.	Item	Extension length	Allowable capacity (FOS 1.67)	Ultimate capacity	Weight
586620000	DokaRex alignment strut 305 IB	6' – 10'	25kN – 18kN (5.6-4.1kips)	41.7 – 30.0kN (11.26-9.0 kips)	38lbs
586621000	DokaRex alignment strut 450 IB	10' – 14'-8"	20kN – 11kN (4.5-2.5kips)	33.4 – 18.3kN (7.5-4.1 kips)	44lbs
586622000	DokaRex alignment strut 750 IB	14'-7" – 24'-7"	25kN – 16kN (5.6-3.6kips)	41.7 – 26.7kN (9.3-6.0 kips)	94lbs
586623000	DokaRex alignment strut 1020 IB	23'-3" – 33'-5"	30kN – 24kN (6.7-5.4kips)	50.1 – 40.0kN (11.2-9.0 kips)	205lbs
586624000	DokaRex docking head M20				6lbs
586627000	DokaRex strut head EB M20				3lbs
586629000	DokaRex panel-strut shoe M16/M20				10lbs
586630000	DokaRex formwork-adapter pin set				1lb

DokaRex

Used on prefabricated elements.

DokaRex for precise adjustments on every kind of prefabricated element.



On concrete precastings.



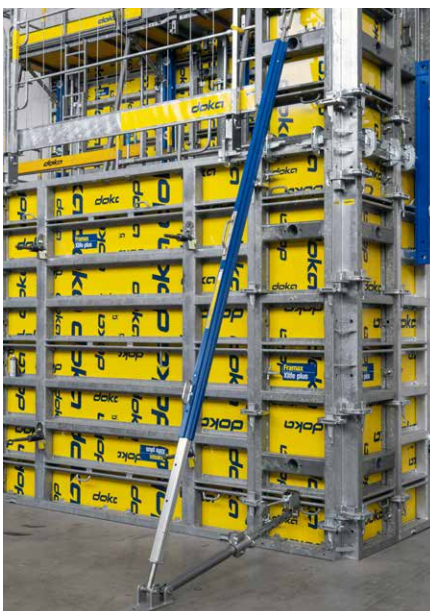
On timber and steel structures.



Connection by worker on ground level by means of docking head.

Used on formwork

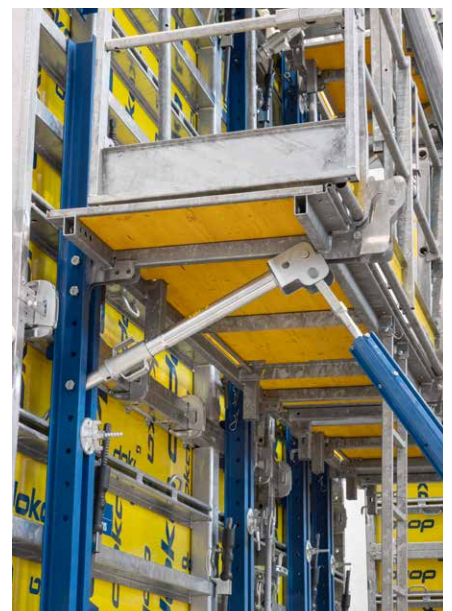
A simple adapter set enables DokaRex alignment struts to be used with all Framax, Frami and Top 50 wall formwork systems as well:



Alignment strut on the formwork (with formwork-adapter pin set).



Panel struts on the formwork (with formwork-adapter pin set and panel-strut shoe).



Alignment strut on the Xsafe plus platform (with formwork-adapter pin set).

Alignment strut DokaRex

Fast, light and precise.

Fast and precise

- Rapid progress with ready-to-use strut
- Exact alignment made easy by the covered fine thread
- Gapless range of lengths from 6ft to 33.5ft with only 4 strut types
- Integral anti-twist lock for quick and easy length adjustment

Durable and rugged

- Special aluminium profile for robustness
- Powder coating for fast cleaning and minimal concrete adhesion

Ergonomic and safe

- Up to 30 % lighter than comparable products
- Safe operation, because handles are near ground level
- Docking heads, so connections can be made by operators working at ground level
- Enhanced safety with the tube anti-dropout latch



Scan to learn more



Spæncom-Kanalboliger, Denmark



/DokaUSA



/DokaNorthAmerica



/company/doka-usa



/dokausa



/@dokausa

USA | T 877 365 2872 | usa@doka.com | Canada | T 866 923 6629 | canada@doka.com | www.doka.com
Denver (Mountain Area) | Doka USA Ltd. | 8780 E. 93rd Place | Commerce City, CO 80640 | T (303) 791-1388
Salt Lake City (Mountain West Area) | Doka USA, Ltd. | 455 South 600 E | Lehi, Utah 84043 | T (303) 791-1388